

**BN** Ben Nye®



Makeup Catalog **2004-06**

## 2 CREME FOUNDATIONS

### 3 CREME COLORS

- Creme Cheek Rouges
- Creme Highlights
- Creme Colors
- Creme Rouge Wheel
- Creme Brown Shadows

### 4 COLOR CAKE FOUNDATIONS

### 6 MATTE FOUNDATIONS

### 8 NEUTRALIZERS & CONCEALERS

- Conceal-All Wheels
- Mellow Yellow®
- Coverette®
- Cover-All Wheels
- Red Neutralizers
- Special Dark Highlights
- Tattoo Cover-All Wheel
- Mellow Orange®
- Special Yellow Highlight
- Highlight Wheel
- Blue Neutralizers
- Special Green Concealer
- Shadow Wheel
- Tattoo Covers
- Concealer Palette
- Brown Contour Wheel
- Five O'Sharp®
- Neutralizing Crayons

### 10 EYE SHADOWS & ACCENTS

- Pressed Eye Shadows
- Mascara
- Cake Eye Liner
- Eye Shadow Palette
- Eye Liner Pencils
- Eyebrow Pencils
- Pearl Sheen Shadows
- Liquid Eye Liner

### 12 LUMIÈRE & FIREWORKS

- Lumière Grande Colour
- Luxe Sparkle Powder
- Fireworks Creme Colors
- Lumière Palettes
- Luxe Powder
- Fireworks Pencils
- Lumière Creme Wheel
- Fireworks Wheel

### 14 CHEEK & LIP COLORS

- Powder Cheek Rouge
- Contour Rouge
- Lip Gloss Wheel
- Powder Rouge Palette
- Lip Colour Pencils
- Lip Gloss
- Natural Blush
- Lipsticks
- Classic Lip Pencils

### 16 FACE POWDERS

- Classic Face Powders
- Visage Poudre

### 18 MAGICAKE®, LIQUID PAINT & GLITTER

- MagiCake Palettes
- Liquid Face & Body Paints
- Sparklers Glitter
- MagiCake Aqua Paints
- Aqua Glitter
- Glitz It Glitter Gel

### 20 CLOWN MAKEUP

- Clown White
- Professional Clown Series
- Clown Creme Palette
- Clown White Lite
- Bright Color Series
- Character Wheels

### 21 FACE PAINTING MAKEUP

- Johnny Brown Aqua Crayons
- MagiColor Creme Pencils
- Primary Creme Palette
- Lip Colors
- MagiColor Creme Crayons
- Creme Color Stack-Ups

### 22 EFFECTS WHEELS & COLORS

- Professional Wheels
- F/X Wheels & Colors
- Character Bases

### 23 HAIR & CHARACTER EFFECTS

- Liquid Hair Colors
- Character Powders
- Tooth Colors
- Crepe Wool Hair
- Bronzing Body Tint
- Black Light Pen & Flashlight

### 24 BLOOD & LATEX

- Stage Blood
- Thick Blood
- Wrinkle Stipple
- Gelatin Blood Capsules
- Fresh Scab
- Clear Latex
- Effects Gel Wound Kit
- Nose & Scar Wax
- Latex for Sensitive Skin
- Effects Gels
- Liquid Latex
- Bald Cap

### 25 ADHESIVES, SEALERS & CLEANSERS

- Spirit Gum Adhesive
- Bond Off!
- Hydra Cleanse
- Prosthetic Adhesive
- Remove-It All
- Quick Cleanse
- Glitter Glue
- Final Seal
- Brush Cleaner
- Spirit Gum Remover
- LiquiSet Mixing Liquid

### 26 BRUSHES, SPONGES & TOOLS

- Makeup Brushes
- Miscellaneous Tools
- Instructional DVD
- Sponges & Puffs
- Mixing Palettes

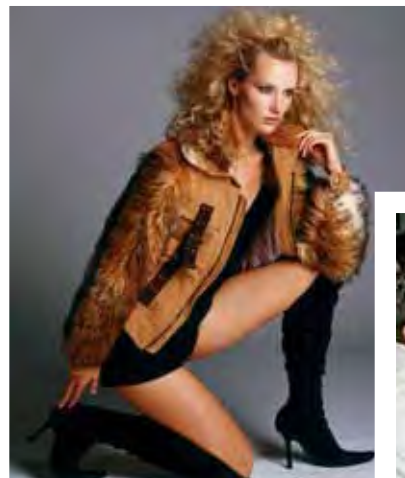
### 28 MAKEUP KITS

- Creme Theatrical Kits
- Personal Kits
- Production Kit
- Cake Theatrical Kits

### 30 HALLOWEEN MAKEUP KITS

### 31 NEW PRODUCTS

- Belle Visage Sheer Foundation
- Lip Colour Palettes
- Belle Visage Poudre Compactés
- Lip Gloss Palette



**Our 2004 Catalog** celebrates Ben Nye's 37th Anniversary of makeup creativity. We are flattered to know that so many of you look forward to the debut of our Catalog every few years. It is always a creative challenge to design and print a brochure that will adequately represent our line. The formula, we have learned, is quite simple: Provide information that is useful, educational and always entertaining.



The following pages represent a wealth of information about Ben Nye Makeup. We are indebted to my father's boundless artistic vision, and thankful for the inspirational ideas we receive from artists around the world who encourage us to design new and improved products. Find out what's new to enhance your imagination. Additions include updated *Theatrical Kits*, *Luxe Sparkle Powders* and an expanded palette of colors. The new *Maple Series*, *Special Dark Highlights* and *Sable Powder* offer enhanced color choices for olive and brown complexions. The concept originated nearly four decades ago when Ben Nye, Sr. first introduced shades for actors of color.

Education and entertainment went hand-in-hand as we planned this new Catalog. We staged an enchanting *Midsummer Night's* fantasy, assembled a quartet of glamour models and produced two delightful old age characters to assist artists and performers to refine their artistic talents. Photos from our productions are pictured here to give you a behind-the-scenes glimpse into the creation of these portraits. We are proud to include characters that have become classics in our portrait gallery for their beauty, whimsy and value to makeup ingenuity.

These pages are dedicated to the artists who challenge us to perfect and cultivate makeup excellence. Enjoy this Catalog as you do our products. Thank you for your continued confidence in Ben Nye Makeup.



Dana Nye, President

Our *Midsummer Night's* Fantasy production crew (clockwise from top center): Jerry Garns, Dana Nye, Amanda Elliott (*Titania*), Karen Hudson, Patricia Saito-Lewe, Alia Tracy (*Puck*), Christina Knapp, Rob Luke (*Oberon*), and Rick Geyer.

*Midsummer Night's Fantasy* Makeup & Wigs: Rick Geyer • Costumer: Karen Hudson • Assistant Makeup: Christina Knapp • *Glamour Quartet* Makeup: "TC" Thecla Luisi • Hair: Cydney Cornell • Costumer: Karen Hudson • Assistant Makeup: Nicole Porrecco • *Old Age Duo* Makeup & Wigs: Rick Geyer • Costumer: Karen Hudson • *Elizabeth I* Makeup & Hair: Rick Geyer • Costume Stylist: Peter A. Lovello • Assistant Makeup & Hair: Vanessa Dionne • *Masquerade Kids* Makeup: Nan Zabriskie • Costumer: Karen Hudson • *Patriot Body Makeup* Makeup Design and Detail: Liza Coggins • Airbrush Makeup: Mark Frazier • Assistant Makeup & Wig: Vanessa Dionne • Beauty Makeup: Dale Bach • Costumer: Karen Hudson • *Jokesters* Marianne Wittelsberger & Steve Bauer • *Gator the Hobo* Kenneth Jones • *Debonair Ghoul* Makeup: Barry Koper • Costumer: Karen Hudson • *Black Light* Makeup: Joel Swenson • *Masquerade and Effects Characters* Makeup: Barry Koper, Patricia Messina, Keith Cray • *Midsummer Night's Fantasy, Old Age & Product Photography* Jerry Garns • *Glamour Photography* Marcel Indik • *Behind-the-Scenes Photography* Dana Nye • *Editorial* Dana Nye, Patricia Saito-Lewe • *Art Direction* Tom Lombardi, Lombardi Design, Inc. • *Printing* ColorNet Press •

The design and image of Jokesters® is a trademark of Jokesters.org, owned by Marianne Wittelsberger and Steve Bauer. All rights reserved.

©2004 & 2006 Ben Nye Company, Inc. All rights reserved.

# CREME FOUNDATIONS

*Ben Nye's Creme Foundations serve as a "canvas" for makeup designs. Our theatrical foundation palette is stylishly diverse to subtly blend with all complexions, or to dramatically alter a performer's skin tone.*

*Foundations blend effortlessly with Concealers, Rouges, Highlights, Shadows and Creme Colors. Intense pigmentation provides excellent coverage.* .5oz./14gm. Expect 25-75 applications.

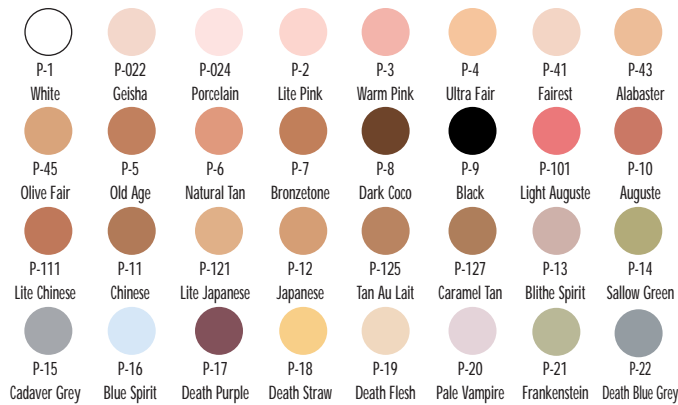


Rob Luke

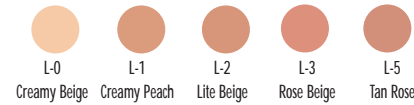


*Olde Merchant of Nye*

**Proscenium (P) Series** Classic colors ideal for characters where specialty shades are required. Vivid pigmentation for durability and dramatic results.



**Lite (L) Series** Soft, natural shades impart a warm tan-peach tone from very fair to subtle tan-rose. Suitable for actors with fair skin tones.



**Tan (T) Series** Golden-tan shades suitable for blond to brunette Anglo performers.



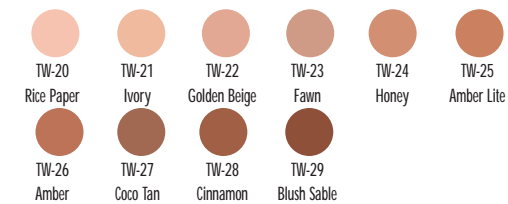
**Medium (M) Series** Healthy, natural shades suitable for Anglo males. Best when applied thinly like a stain. *FYI: (M) and (Y) Series appear darker in the container than when applied.*



**Olive (Y) Series** Natural shades for actors with olive skin tones. Also useful for olive-toned ethnic characters, such as the *Sharks* in *Westside Story*.



**Twenty (TW) Series** Light olive to deep warm-browns. This series complements brunettes, olive and brown skin tones.



**Maple (MA) Series** Golden light-brown to rich brown tones provide an attractive, contemporary palette of shades for performers of color.



*"Queenie" from Showboat*



Charmine Walker

# CREME COLORS



## Creme Cheek Rouges

Apply *Creme Rouge* to accentuate radiance on cheeks, and to alter or deepen facial contours. Highly pigmented formulation assures versatility for intense coverage or natural subtlety.

As seen in our *Olde Merchant* portrait (left), rouge was lightly stippled across crow's feet and wrinkled areas for broken capillary effects.

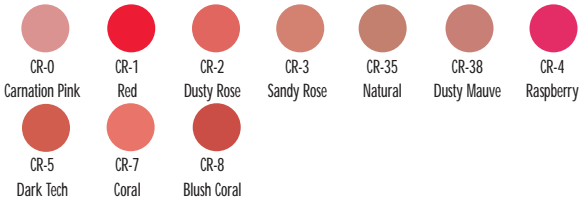
CR .25oz./7gm. Expect 35-125 applications.



## Creme Rouge Wheel

Ben Nye's blendable creme blush shades color cheeks naturally. Inspired by fashion magazines and European artists, this indispensable wheel offers six beautiful shades, from natural to vibrant.

CR-100 1oz./28gm. Expect 50-200 applications. Shades: CR-3, CL-13, CR-0, CR-4, CR-7, CR-2.



## Creme Highlights

Apply to improve, correct or change facial features. Brighter tones, such as *CH-0 Ultralite*, instantly create the appearance of bags, jowls and crow's feet when used in tandem with shadows. Warmer shades diminish under-eye discoloration.

CH .25oz./7gm. Expect 35-125 applications.



## Creme Brown Shadows

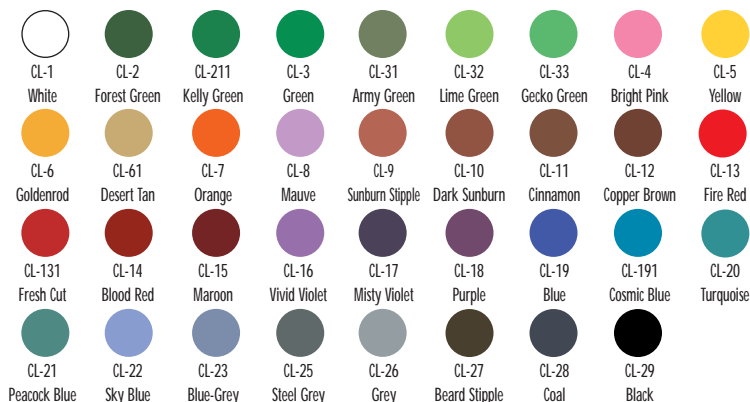
Ben Nye, Sr. designed his remarkable shadow palette to both improve and distort facial features. For corrective applications, shadows streamline a full face or crooked nose, or hide a double chin. Highly pigmented colors enable subtle application for close-up realism, or intense color for broad, dramatic effects.

CS .25oz./7gm. Expect 35-125 applications.



## Creme Colors

Our richly pigmented *Creme Colors* are ideal primary or secondary accent shades to create whimsical, dramatic, animal, clown or fantasy. Apply to bare skin or blend. A few colors may temporarily stain. CL .25oz./7gm. Expect 35-125 applications.



Makeup Artist "TC" Thecla Luisi adds subtle cheek color with shades from our *Creme Rouge Wheel*. Rouge is "dabbed" onto the cheek area in an arc of color, then blended with fingers or brush for natural results.

## Age Highlights

Base:  
MA-3 Hazelnut

Highlights:  
CS-7 Sienna Orange  
SC-3 Light Brown Highlight  
CL-6 Goldenrod

Use *Goldenrod* as a blending shade to brighten highlights as desired.



## Age Contours

Shadows:  
MA-6 Deep Ebony  
CS-6 Midnite Brown  
CL-17 Misty Violet

*Deep Ebony* was used for contouring. Add *Midnite Brown* and *Misty Violet* to strengthen creases of shadows.



## Blending Highlights and Shadows

Once highlights and shadows are in place as shown, blend edges with a clean brush. Powder to set makeup.

Note: Only the model's left side is blended to illustrate the difference between the hard edges on the right and the softer blended edges.



# COLOR CAKE FOUNDATIONS



Elizabeth I (Amanda Elliott)  
Rick Geyer, Wig Master for the Los Angeles Opera, created "Elizabeth's" porcelain-like finish with Color Cake (PC-022 + PC-2) applied over powdered Matte Foundation (IS-1). See more of Amanda on page 17 as Titania.

Our Color Cake Foundations possess many useful qualities, including a diverse color range in a creamy, water-activated formula. Neutral beige, olive and brown tones offer artists exceptional color options.

Cakes apply quickly and evenly without chalkiness. Recommended for use on performers with oily or sensitive skin.

An outstanding foundation for body makeup and large cast ensembles, such as opera, ballet, choir or musical theatre. Resistant to heat and perspiration.

PC 1oz./28gm. Expect 25-100 applications.



Makeup Artist Christina Knapp applies body makeup to Puck (Alia Tracy): Christina started with a mixture of PC-40 Shinsei Ivory and PC-42 Japanese Color Cake for the base. Shades of MagiCake and Color Cake were mixed to match the costume, then painted on hands, arms, legs and feet to simulate costume pattern. Highlights of LX-8 Chartreuse, LX-61 Sun Yellow (both mixed with LiquiSet) and AG-1 Gold Aqua Glitter completed this mischievous and alluring makeup.

PC-1 White	PC-02 Light Ivory	PC-021 Bisque	PC-022 Geisha	PC-2 Porcelain	PC-30 Ecru	PC-305 Barely Beige	PC-31 Ciné Fairest
PC-32 Ciné Fair	PC-33 Ciné Light Beige	PC-34 Ciné Beige	PC-36 Ciné Light Tan	PC-4 Navajo Sand	PC-40 Shinsei Ivory	PC-41 Shinsei Fair	PC-42 Japanese
PC-43 Chinese	PC-46 Rose Blush	PC-47 Ingénue	PC-48 Fair Lady	PC-5 Natural No. 1	PC-51 Natural No. 2	PC-6 Buckskin	PC-7 Rose Beige
PC-8 Blithe Spirit	PC-81 Cadaver Grey	PC-82 Blue Spirit	PC-83 Sallow Green	PC-84 Death Purple	PC-840 Death Flesh	PC-841 Death Straw	PC-842 Pale Vampire
PC-843 Frankenstein	PC-87 Fair Male	PC-89 Tan Male	PC-9 Tan No. 1	PC-11 Tan No. 2	PC-111 Tan No. 3	PC-114 Warm Tan	PC-115 Ruddy Tan
PC-12 Auguste	PC-13 Old Age	PC-135 Calcutta	PC-137 Tan Au Lait	PC-14 Mocha	PC-16 Chestnut	PC-17 Light Egyptian	PC-19 Dark Egyptian
PC-20 Olive Sable	PC-205 Mocha Java	PC-21 Golden Ebony	PC-23 Black				

*Application Tip: Lisa Brockman-Katz, instructor and makeup artist, recommends using dry Color Cake as a powder highlight and contour in place of more costly powder foundations. "By using a dry brush (and cake), you can achieve the same results as the higher-priced product, minus the expense."*



**Puck (Alia Tracy)** • Base: CN-001 Clair, CN-002 Barely Beige • Highlight: HY-1 Special Yellow Highlight 1 • Contour: CC-3 Coverette Medium • Powder: Neutral Set Translucent • Eyes: LX-8 Chartreuse, LX-61 Sun Yellow, ES-75 Black Plum Shadow, EP-85 Espresso Eye Pencil • Rouge: DR-7 Coral, LU-21 Indian Copper • Eyebrows: EP-4 Medium Brown Pencil, ES-60 Bark Shadow, LU-21 Indian Copper (wet) • Lips: LP-127 Nude Lip Colour Pencil, FW-1 Gold Dust Fireworks •  
*See body makeup details on page 4.*

**Oberon (Rob Luke)** • Base: CN-003 True Beige • Highlight: CN-0 Ultra • Contour: CS-4 Dark Brown • Powder: Neutral Set Translucent, CP-5 Beige Compact • Eyes: PS-19 Silver Grey Pearl Sheen, ES-52 Mocha Shadow, ES-92 Patriot Blue Shadow, ES-99 Black Shadow, CP-0 Gothic White Compact (inner corners of eyes), EL-1 Black Cake Liner, EP-90 Onyx Eye Pencil • Beard: CL-27 Beard Stipple Creme • Eyebrows: CL-27 Beard Stipple Creme, ES-99 Black Shadow • Lips: LS-7 Natural Lipstick •

# MATTE FOUNDATIONS

Matte Foundations provide a versatile blend of high pigmentation and natural coloring in a light, silky smooth texture. Superb color selection for all skin types. .5oz./14gm. Expect 35-60 applications.



*Application Tip: For a sheer, natural finish, apply base with a lightly moistened sponge. Blend several shades on a mixing palette to create precise tones. Makeup artists will often use several shades of base on the face to add more dimension.*



Faye • Base: CN-001 Clair and CN-002 Barely Beige • Neutralizer: MO-11 Mellow Orange® Lite • Rouge: CR-4 Raspberry Creme, DR-14 Latté • Powder: BV-1 Banana Visage •

## Ciné (CE) Series

Neutral shades designed without excessive warmth or "redness" for very fair to tan beige European skin tones.



## Soft Beige (BE) Series

An attractive palette ranging from fair to mid-beige with a hint of warmth.



## Beige Natural (BN) Series

Complimentary beige shades for medium skin tones.



## Olive Beige (OB) Series

Beige shades with a hint of olive.



## Special Light Olive (SO) Series

Ideal for fair olive skin tones that need a natural wash of color.



## Shinsei (SH) Series

One of our most popular series originally designed for Asian and olive complexions, Shinsei shades offer attractive neutrality and subtle color for a variety of skin tones.



## Natural Olive (NO) Series

Golden-olive tones popular for makeup artists and performers who desire a neutral palette. Shades may be used effectively as an underbase to tone down redness.



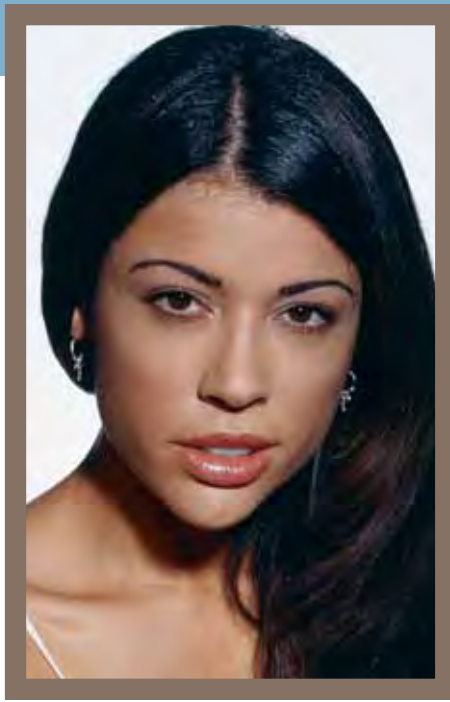
## Warm Olive (WO) Series

Subtle olive-beige shades for fair to medium golden tones.





**Brighdie** • Base: NO-5 Brulée • Neutralizer: NB-1 Blue Neutralizer 1, NP-5 Red Concealer 2 • Rouge: CR-2 Dusty Rose Creme, DR-13 Natural Blush • Powder: BV-1 Banana Visage •



**Candice** • Base: NO-5 Brulée • Highlight: ES-312 Banana Shadow • Rouge: DR-14 Latté, DR-15 Coco Rose • Powder: BV-1 Banana Visage Poudre •



**Tamara** • Base: SA-1 Au Lait, IS-33 Chinois, IS-35 Chinois Medium • Contour: SA-5 Mocha • Powder: BV-81 Caramello Visage Poudre •

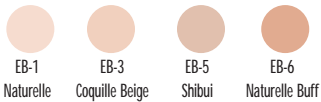
### Ciniora (CN) Series

Neutral shades suitable for fair to light-olive skin tones.



### Euro Base (EB) Series

Subtle beige hues with subdued warmth for fair to medium complexions.



### Natural (N) Series

This fashion and film ensemble adds classic warmth to fair and olive complexions.



### Film & Tape (FT) Series

Subtle colors have become standards for performers with light tan, medium olive and brown complexions.



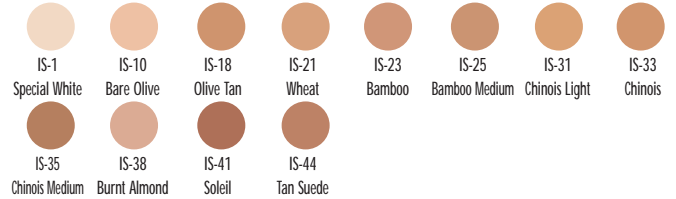
### Sahara (SA) Series

Natural olive-brown shades for African-American performers. Colors also perform well as a tan alternative for fair skin.



### International (IS) Series

This special series offers a wide range of our most popular natural fair, olive and subtle tan shades.

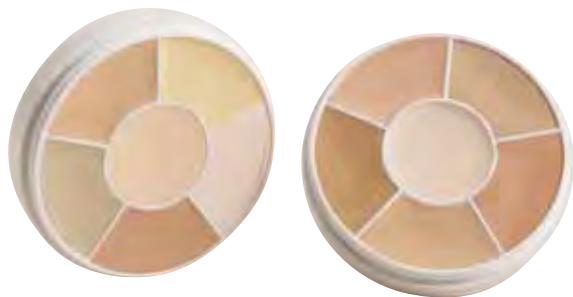


Makeup Artist "TC" Thecla Luisi applies base to Brighdie at our glamour photo shoot.

# NEUTRALIZERS & CONCEALERS

Artists the world-over rely on Ben Nye's unique Neutralizers to conceal facial imperfections.

Our comprehensive palette expertly blends away temporary and permanent imperfections, including tattoos, birthmarks and blemishes. All are formulated to be creamy, and highly pigmented for seamless coverage.



## Total Cover-All Wheels

Our most popular neutralizing shades are included in these two six-color wheels. Apply to cover redness, tattoos, blemishes and other discolorations. The *Total Cover-All Wheel II (SK-200)* includes useful shades for fairest complexions.

1oz./28gm. Expect 50-250 applications. SK-100 Shades: MY-1, MY-2, MO-1, MO-11, MO-2, CC-1. SK-200 Shades: GC-1, CC-1, HY-1, MO-1, CC-2, CH-0.

## Total Conceal-All Wheel

Be totally prepared to cover blemishes and skin discoloration with our highly pigmented shades. Exceptional versatility for the busy artist. NK-11 1oz./28gm. Expect 50-250 applications. Shades: NR-1, NB-1, MY-3, NT-1, NB-3, GC-1.



## Cover-All Wheel

Four classic neutralizing shades are included in this best selling palette. Mutes redness, veins, tattoos, beard shadows and skin discolorations.

SK-1 .5oz./14gm. Expect 40-150 applications. Shades: MY-2, MO-2, CC-3, FS-3.

## Tattoo Cover-All Wheel

Conceal tattoo markings and other color imperfections with these four intense creme shades. (See our useful tattoo cover-up techniques on page 9.)

SK-11 .5oz./14gm. Expect 40-150 applications. Shades: MY-3, NB-4, CC-1, NT-2.

## Creme Highlight Wheel

Four versatile shades for corrective, beauty, old age and character highlights.

SK-2 .5oz./14gm. Expect 40-150 applications. Shades: CH-0, CH-01, CH-2, CH-5.

## Creme Shadow Wheel

Four indispensable contours for beauty, corrective, old age and character designs.

SK-3 .5oz./14gm. Expect 40-150 applications. Shades: CS-2, CS-3, CS-4, CL-11.

## Brown Contour Wheel

Four practical highlight and contour shades for deep olive to brown complexions.

SK-31 .5oz./14gm. Expect 40-150 applications. Shades: SC-2, CS-6, SC-4, CS-9.

## Conceal-All Wheel

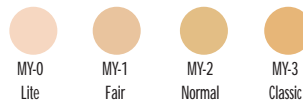
Four effective concealers make this a must for every makeup case.

NK-1 .5oz./14gm. Expect 40-150 applications. Shades: NT-2, NB-1, NB-2, NR-1.

## Mellow Yellow®

Cover redness with Ben Nye's four intensely pigmented neutralizing shades. Effectively conceal red-hued blemishes, scars, capillaries and tattoos. *MY-3 Mellow Yellow Classic* is modeled after Ben Nye, Sr.'s original formula to mute intense redness.

MY .3oz./8.4gm. Expect 50-200 applications.



## Red Neutralizers

Specifically designed to conceal intense redness due to bruising, acne, birthmarks or capillaries. Use before base as a facial corrector, or blend with other neutralizers. *NR-1* and *NR-2* also formulated as *Neutralizing Crayons*. NR .3oz./8.4gm. Expect 50-200 applications.



## Mellow Orange®

Exceptional shades to neutralize blue-greens including veins, tattoos, bruises and deep under-eye discolorations. Included in *Concealer Palette*, *Cover-All Wheel* and *Neutralizing Crayon*. MO .3oz./8.4gm. Expect 50-200 applications.



## Blue Neutralizers

Conceal blue-hued discolorations, such as veins, tattoos, bruises and deep under-eye circles with this unique palette. NB .3oz./8.4gm. Expect 50-200 applications.



## Tattoo Cover

Distinctive shades to cover tattoos and other deep discolorations. Formulated with highest pigmentation for maximum coverage. Included in *Conceal-All Wheels* and *Concealer Palette*. NT .3oz./8.4gm. Expect 50-200 applications.

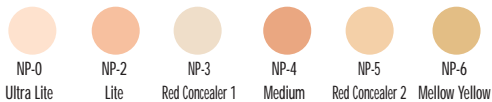


*"I love using Ben Nye's Blue Neutralizers for under-eye discoloration. Most people get a blue-violet color under their eyes when they're tired and this product knocks that right out! I have every shade in my kit."*  
- "TC" Thecla Luisi



### Creme Neutralizing Crayons

Crayons quickly banish red, blue and dark discolorations, accentuate highlights, or correct facial features. Our creamy, richly pigmented formula blends easily. Makeup Artist Nadege Schoenfeld recommends them to cover freckles and age spots on hands for close-ups. Great for quick touch-ups. Sharpen with *Dual Hole Sharpener*. NP .09oz./2.5gm. - .1oz./2.8gm. Expect 50-200 applications.



### Five O' Sharp®

Conceal blue-black beard shadows with this series of four specialty cover-ups. May be applied beneath or over foundation tone. Very effective in concealing deep discolorations, including black-eyes or intense under-eye discoloration. FS .3oz./8.4gm. Expect 50-200 applications.



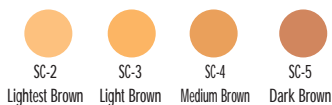
### Coverette® Cover-up

Often recommended by doctors and "camouflage artists" to cover scar tissue, birthmarks, vitiligo and post-op skin discoloration. Blends easily on most skin tones. CC .3oz./8.4gm. Expect 50-200 applications.



### Special Dark Highlights

Specially crafted for olive and brown skin tones to conceal discolorations and highlight naturally for beauty and character designs. SC .3oz./8.4gm. Expect 50-200 applications.

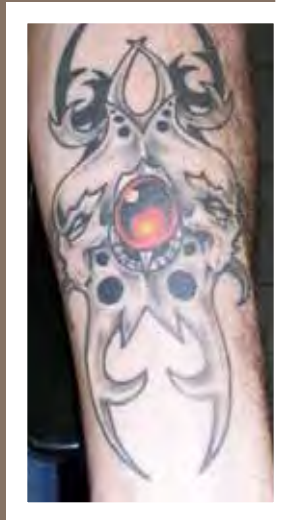


### Special Yellow Highlight No. 1

Versatile shade to blend or lighten other creme colors without turning them flat or grey. Attractive highlighting shade. HY-1 .3oz./8.4gm. Expect 50-200 applications.

### Special Green Concealer No. 1

A must have blending tone to diminish deepest red flaws, or to enhance effectiveness of other neutralizing shades. GC-1 .3oz./8.4gm. Expect 50-200 applications.



### Covering Tattoos

*Dana Nye covered this tattoo while visiting with artists in Vienna.*

1. Cover the darkest blue-black shade first with an orange-based shade such as *MO-3 Mellow Orange Deep* or *NB-4 Blue Neutralizer 4*. Apply with fingers or sponge with a stippling motion.
2. Blend, then set with face powder such as *Fair Translucent*. Apply powder liberally. Dust off excess, and dab with a moistened sponge.
3. Spray *Final Seal* over powdered *Concealer* to resist smudging.
4. Cover any redness with the appropriate *Mellow Yellow* or *Red Neutralizer* shade (*MY-3 Mellow Yellow Classic* was used here). Powder and seal again (repeat Steps 2 and 3).
5. Apply additional layer of *Concealers* as necessary. Apply foundation over the entire area to blend with skin tone. *Color Cake Foundation* (as used here) will provide an excellent finish. Apply with a moistened sponge, then gently pat to even out color.
6. Top with a final layer of *Final Seal* for extra durability.



### Concealer Palette

Our palette covers the gamut when it comes to tattoos and discolorations. Intensely pigmented cremes provide flawless, long-wearing and "invisible" coverage. CNN Makeup Artist, Skip Smith said, "This palette has everything I need to keep journalists looking blemish free". Refillable. NKP-12 3oz./84gm. Net Wt. Expect 200-1000 applications. Shades: RMY-1, RMY-2, RCC-2, RCC-3, RMO-2, RFS-1, RHY-1, RGC-1, RNR-2, RNT-1, RNT-2, RNB-1

# EYE SHADOWS & ACCENTS

Contour, shape and style the eyes with this distinctive makeup collection of pressed colors, pencils and liners.



## Pressed Eye Shadows

Our new *Eye Shadow* texture assures velvety smooth application in 40 rich shades. *Shadows* are packaged in a "soft touch" container with practical hinged cover. For subtle liner or dramatic smoky effects, apply *Shadow* with our useful *Angle Brush*. *Shadows* may also be applied wet. ES .12oz./3.5gm. Expect 25-150 applications.



## Artist's Eye Shadow Palette

Enjoy the convenience and versatility of our eight color, refillable *Eye Shadow Palette*. Sleek, light, yet durable fiberboard case has secure magnetic closure. Standard *Palette* listed below, or design your own combination of *Eye Shadows*, *Powder Rouges* and *Lumière Grande Colours* (refills available in all shades).

ESP-8 Empty Palette (Refills sold separately.) ESP-91 .98oz./28gm. Net Wt. Expect 200-500 applications. Shades: ER-302 Vanilla, ER-319 Honey, ER-34 Taupe, ER-56 Espresso, ER-62 Mossberry, ER-76 Burgundy, ER-90 Navy Blue, ER-99 Black.



**Candice** • PS-12 Mango Pearl Sheen • PS-13 Walnut Pearl Sheen • PS-21 Charcoal Pearl Sheen • EL-1 Black Cake Eye Liner • LP-133 Nutmeg Lip Colour Pencil • LS-39 Passion Flower Lipstick •



## Pearl Sheen Eye Accents

Draw attention to eyes, face and body with these shimmering pressed colors. Light, silky texture provides just the right amount of glimmer for delicate highlights or dramatic contouring. PS .06oz./1.7gm. Expect 35-125 applications.



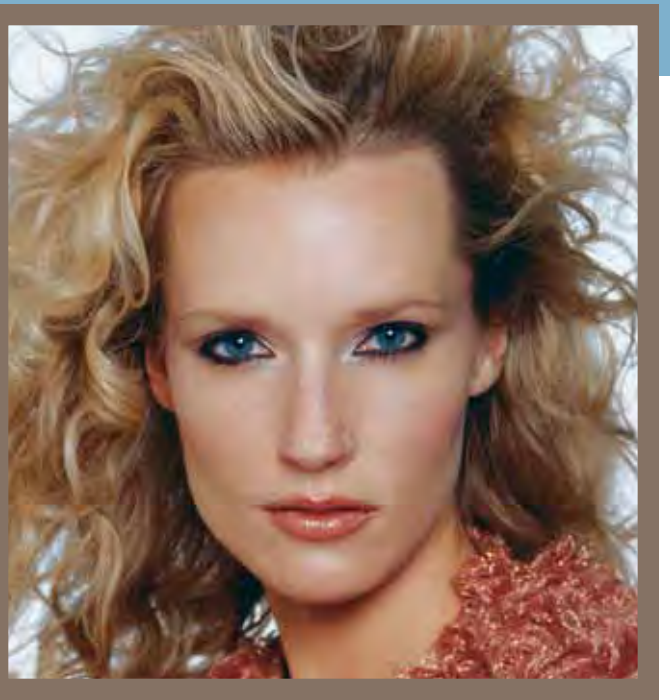
## Mascara

Coat lashes and intensify color with our *Black and Brown Mascaras*. Style brows, or facial hair with *Clear Mascara*. *White Mascara* quickly ages facial hair, sideburns and temple areas. Generous spiral brush assures precise application. Water-resistant formula. LM-0 White, LM-1 Black, LM-2 Brown, LM-3 Clear. .31fl.oz./9.3ml. Expect 50-100 applications.





**Brighdie** • PS-15 Gold Pearl Sheen (Upper & Lower Lids) • EL-1 Black Cake Eye Liner • LS-11 Desert Rose Lipstick • LG-21 Apricot Glaze Lip Gloss •



**Faye** • ES-314 Shell Shadow • ES-319 Honey Shadow • ES-395 Terra Cotta Shadow • ES-59 Rich Suede Shadow • LU-1 Ice Grande Colour • EP-90 Onyx Eye Liner Pencil • EL-1 Black Cake Eye Liner • LP-135 Spice Lip Colour Pencil • LG-10 Nude Lip Gloss • LG-21 Apricot Glaze Lip Gloss •



**Liquid Eye Liner**

Easily line eyes with our creamy, highly pigmented formula. Smudge and water-resistant. Improved brush allows for quick, precise detailing.  
LE-0 White, LE-1 Ebony, LE-2 Dark Brown. .38oz./11.3gm. Expect 35-100 applications.



**Eye Liner Pencils**

*Eye Liner Pencils* quickly enhance brow contours. Moist, yet firm texture holds a precise point when sharpened.  
EP 7" Length, .05oz./1.4gm. Expect 50-200 applications.



EP-85 Espresso  
EP-90 Onyx



**Eye Liner Pencils**

Pencils offer eye appealing opacity in a moist, creamy texture. Smudge with a brush or swab for a softer, subtle line. Powder lightly for added durability.  
EP 4.75" Length, .04oz./1.13gm. Expect 50-175 applications.



**Cake Eye Liner**

Apply with a *RS-1 Round Brush* and water for natural, smudge-proof lining. Excellent for beauty, masquerade, clown, or animal designs. For greater durability, apply with *LiquiSet Sealer*.  
EL .07oz./2gm. Expect 50-250 applications.



*Ben Nye Eye Shadows* are intensely pigmented. When a more subtle application is desired, "TC" Thecla Luisi dips her brush into loose face powder before "loading" Shadow color. Color glides on with a more delicate finish.

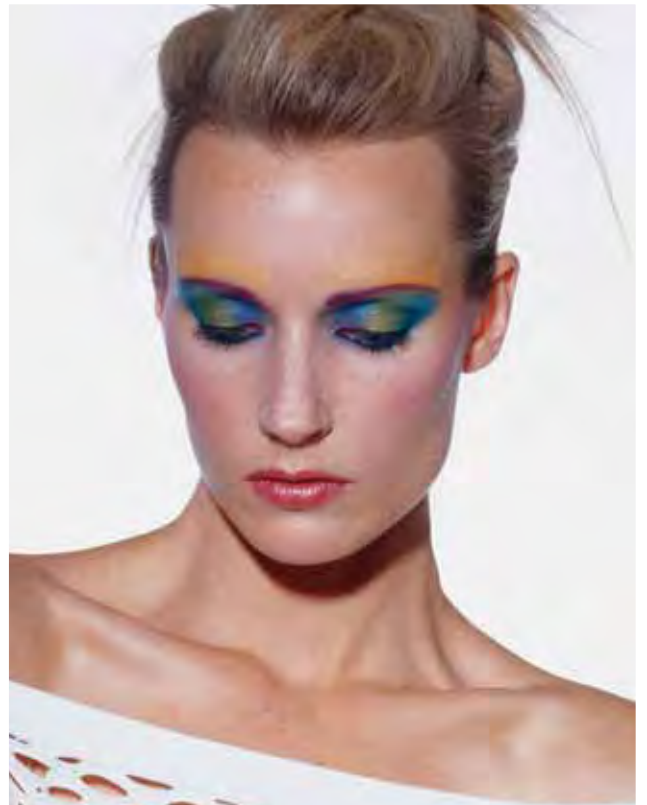
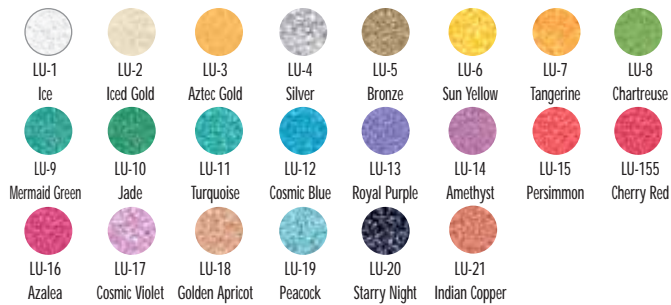
# LUMIÈRE & FIREWORKS

Turn up the volume for beauty and fantasy with luminescent Lumière and Fireworks colors. Apply dry like an eye shadow, or mix with water or LiquiSet for dramatic, opaque color.



## Lumière Grande Colour

Color intensity is tantalizingly bold. Each of our twenty-two shades provides a brilliant, luminescent finish. Apply dry, or wet with water for enhanced opacity. Seal with *Final Seal* or *LiquiSet*. Makeup Artist "TC" Thecla Luisi applied dry *Grande Colours* to Faye (right), blending the shades into an opulent kaleidoscope of color. LU (Personal Size)/ LUR (Refill for ESP-8, page 10) .09oz./2.7gm. Expect 25-150 applications.



Faye • LU-6 Sun Yellow • LU-8 Chartreuse • LU-12 Cosmic Blue • LU-14 Amethyst •



## Lumière Creme Wheel

Six shimmering shades for sizzling beauty or fantasy accents. Set with *Luxe Powders* for a fabulous finish.

LU 1oz./28gm. Expect 50-250 applications. Shades: Sun Yellow, Jade, Persimmon, Cosmic Blue, Royal Purple, Ice.

## Lumière Grande Colour Palettes

Take along our *Lumière Palette* when vibrant colors are a necessity. Professional metal palettes are available in either six or twelve "must-have" color assortments for beauty, fantasy or face and body painting. Brush included. All 22 shades are available as *Palette Refills*. *Empty Palette Boxes* (BXE-6 and BXE-12) are available and ready to fill with the colors of your choice.

LUK-6 (6 Colors) .77oz./22gm. Net Wt. Expect 50-250 applications. Shades: RL-1, RL-3, RL-4, RL-6, RL-12, RL-16.

LUK-12 (12 Colors) 1.54oz./44gm. Net Wt. Expect 100-500 applications. Shades: Colors listed above, plus RL-2, RL-7, RL-8, RL-10, RL-14, RL-17.

Refills: RL- (plus color code number) .13oz./3.6gm.



### Fireworks Wheel

On or off stage, this wheel offers beautiful brilliance anytime, anywhere. Six elegant and luminescent cremes for eyes, cheeks and lips.

FW 1oz./28gm.

Expect 50-500 applications.  
Shades: FW-1, FW-3, FW-11, FW-5, FW-9, FW-7.



### Lumière Luxe Powder

Luxe Powders create stunning radiance when applied over bare skin or powdered makeup. Mix with *LiquiSet Sealer* for seamless, luminescent coverage. For subtle beauty, dust *Iced Gold Luxe Powder* all over. LX .21oz./6gm. Min. Wt. Expect 20-100 applications.

### Fireworks Creme Colors

Six luscious soft shimmers in a silky smooth creme texture. Apply directly on skin or over powdered makeup.

FW .3oz./8.4gm. Expect 20-80 applications.



FW-1 Gold Dust    FW-3 Silver Satin    FW-5 Diamond Ice    FW-7 Ruby Luster    FW-9 Copper    FW-11 Bronze

### Fireworks Pencils

Apply as a lip accent or anywhere on the skin. Sharpen with either *Single* or *Dual Pencil Sharpener*. FL 4.75" Length, .04oz./1.13gm. Expect 35-100 applications.



FL-1 Gold    FL-2 Silver



LX-1 Ice    LX-2 Iced Gold    LX-3 Aztec Gold    LX-4 Silver    LX-5 Bronze    LX-6 Indian Copper    LX-61 Sun Yellow    LX-7 Tangerine  
LX-8 Chartreuse    LX-9 Mermaid Green    LX-10 Jade    LX-11 Turquoise    LX-12 Cosmic Blue    LX-13 Royal Purple    LX-14 Amethyst    LX-15 Persimmon  
LX-155 Cherry Red    LX-16 Azalea    LX-17 Cosmic Violet    LX-18 Golden Apricot    LX-19 Peacock

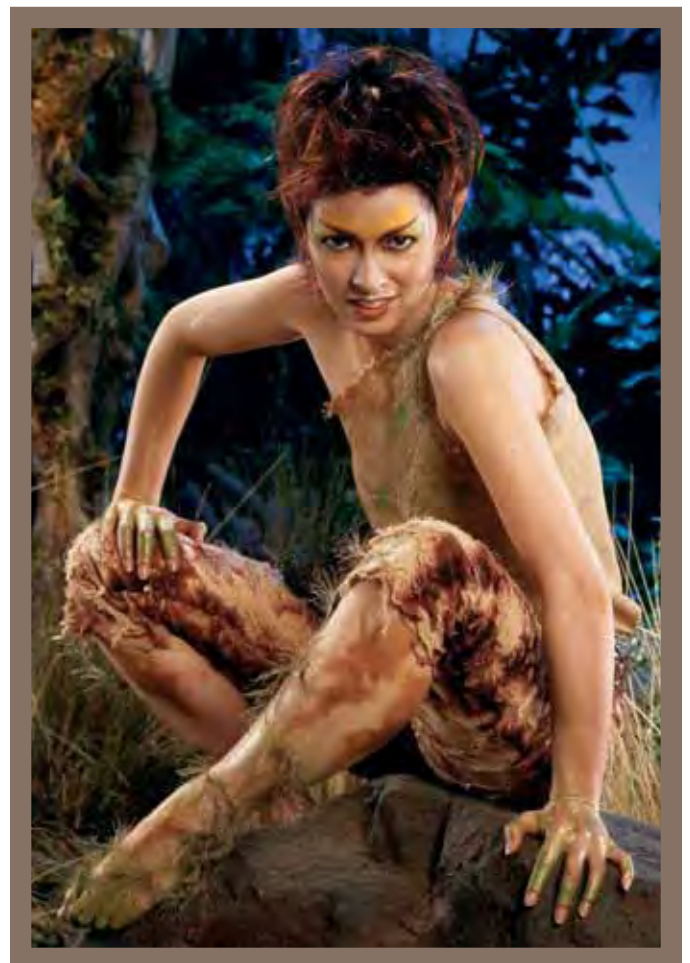


### Lumière Luxe Sparkle Powder

The best of both worlds... *Lumière Luxe Powder* and brilliant glitter. Mix *Sparkle Powders* with *LiquiSet Sealer* to produce a durable luminescent paint. For sheer radiance, dust *Iced Gold* or *Sun Yellow* over a light layer of baby oil. Beautiful on bare skin for *Midsummer Night's fairies*. LXS .28oz./8gm. Expect 10-30 applications.



LXS-2 Iced Gold Sparkle    LXS-4 Silver Sparkle    LXS-61 Sun Yellow Sparkle    LXS-9 Mermaid Sparkle    LXS-12 Cosmic Blue Sparkle    LXS-16 Azalea Sparkle    LXS-17 Cosmic Violet Sparkle    LXS-20 Starry Night Sparkle



# CHEEK & LIP COLORS

Accentuate cheeks with Ben Nye's Powder Cheek Rouges. Apply flattering tints on the face and body to enhance facial contours and add a healthy glow.

Contour, line and emphasize lips with our beautiful collection of Lipsticks, Pencils and Glosses. Lip color instantly adds style, on or off the stage.



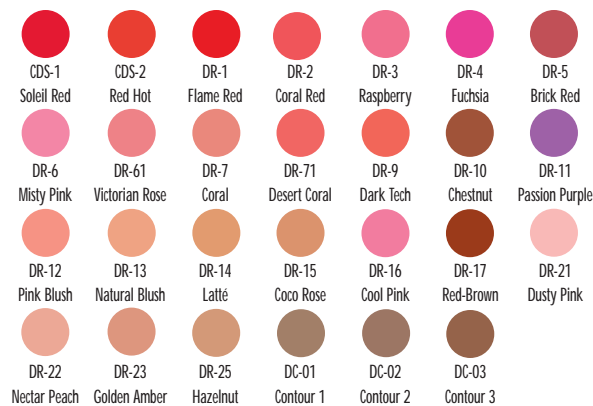
## Powder Rouge Palette

This handy palette contains a practical selection of rouges for beauty, character and contouring. Ideal for use on the set for touch-ups. Sturdy fiberboard palette can be refilled with *Rouge*, *Eye Shadow* or *Lumière Refills*. ESP-92 1.2oz./33.6gm. Net Wt. Expect 200-500 applications. Shades: CDSR-1 Soleil Red, DDR-4 Fuchsia, DDR-61 Victorian Rose, DDR-7 Coral, DDR-9 Dark Tech, DDR-12 Pink Blush, DDR-13 Natural Blush, DDR-15 Coco Rose.



## Powder Cheek Rouge

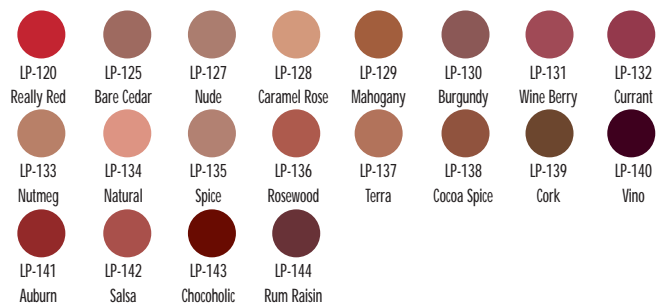
Dust on lightly for a natural glow or apply deeper hues beneath the cheeks for dramatic contouring. Get expert results by applying with *Rouge* or *Powder Brushes*. Use the *Petite Powder Brush* for delicate coloring on high points of nose and cheeks. DR .12oz./3.5oz. Expect 25-150 applications.



*"Red lips show everything, so I like to start with a very clean lip line. When using a red lipstick, I define the lips first with a neutral pencil, such as Spice or Nude. Fill in red lipstick with a lip brush. To finish, go over the borders with a red lip pencil for a sharp, neatly defined line."* - "TC" Thecla Luisi, Makeup Artist

## Lip Colour Pencils

Lusciously moist pencils effortlessly contour lips or easily color them completely. Available in 20 beautiful shades, and still priced dramatically below "designer" lip pencils. Bruce Hutchinson, veteran Hollywood makeup artist, says, "I use them to paint the lips, and then follow with gloss". LP 7" Length, .065oz./1.83gm. Expect 50-150 applications.





### Lipsticks

Ben Nye's Lipsticks are perfect for a variety of makeup designs. Lipsticks are moist, creamy and highly color saturated for vibrant, long lasting wear. Rev-up lip color by applying Ice shades over another color or directly on lips. LS .15oz./4.2gm. Expect 30-125 applications.

LS-1 Gloss	LS-2 Hot Pink	LS-3 Coral	LS-31 Hot Coral	LS-4 Dusty Rose	LS-5 Garnet	LS-6 Plum Pink	LS-7 Natural
LS-8 Cranberry	LS-9 Plum	LS-10 Bordeaux	LS-11 Desert Rose	LS-12 Natural Brown	LS-13 Magenta	LS-14 True Red	LS-15 Siren Red
LS-16 Ruby Red	LS-17 Black	LS-19 Mocha Rose	LS-23 Boysenberry	LS-25 Blush	LS-26 Primrose	LS-27 French Mocha	LS-29 Guava Ice
LS-30 Champagne Ice	LS-32 Rose Glaze	LS-33 Marilyn Red	LS-34 Russian Red	LS-35 Vampira	LS-36 Gold Ice	LS-37 Winter Ice	LS-38 Silver Ice
LS-39 Passion Flower	LS-40 Pink Grapefruit	LS-41 Cotton Candy	LS-42 Softshell	LS-43 Cinnaberry	LS-46 Shy Apricot	LS-47 First Blush	LS-48 Watermelon
LS-49 Cherry Cola	LS-50 Poppy	LS-51 Cherryberry	LS-52 Pink Tart	LS-53 Sangria			

### Lip Gloss Wheel

Provocative & glamorous. Need we say more? Radiant over bare lips or any lip color. Light, fruity fragrance. A must for the makeup case or purse. LGW .94oz./26.6gm. Expect 100-450 applications. Shades: LG-01 Natural, LG-10 Nude, LG-15 Bubblegum, LG-18 Cherry Baby, LG-21 Apricot Glaze, LG-24 Gold Glaze.

### Lip Gloss

Flirty, alluring, natural. Versatile tints add high shine and a wash of color to bare lips or over lip color. Glazes contain a hint of shimmer. Lightly scented. Pots are "stackable". LG .17oz./5gm. Expect 35-80 applications.

LG-01 Natural	LG-03 Champagne	LG-10 Nude	LG-15 Bubblegum	LG-18 Cherry Baby	LG-21 Apricot Glaze	LG-24 Gold Glaze	LG-28 Pewter Glaze



### Classic Lip Pencils

These classics are well suited for traditional theatrical staging. Formulated in a rich, creamy texture which offers excellent coverage to outline or color the lips. Professional length is economically priced. 7" Length, .05oz./1.4gm. Expect 50-175 applications.

LP-19 Scarlet Red	LP-24 Plum	LP-26 Brandy	LP-28 Maroon

# FACE POWDERS

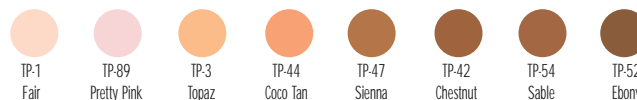
Face Powders *absorb oil, moisture and gently set creme makeup.* Ben Nye Powders are *silky smooth and contain just a hint of color to naturally soften contours.* All are translucent, with the exception of Super White Face Powder.



When applying intense shades around the eyes, such as Eye Shadows and Lumiere Luxe Powders, a temporary layer of face powder will keep the eye area clean. Christina Knapp, makeup artist, prepped Alia (above right) with a generous layer of Neutral Set before applying Luxe Powders, then later dusted away the "fallout" when makeup was completed.

## Classic Translucent Face Powders

*Translucent Powder* sets creme makeups for a durable, soft matte finish. Eight shades are available from subtle *Fair* to warm dark browns. All are available in mini container, and popular shaker bottles (pictured below). MP .9oz./25gm. Mini Power; TP 1.5oz./42gm. Shaker Bottle (codes listed below); 3oz./85gm. Shaker Bottle. Fair and Pretty Pink also available in 8oz./226gm. jar. Expect 35-100 applications per ounce.



**Neutral Set Translucent**  
This colorless powder blends with all skin tones. It's a must to set bright or dark shades to retain color. Special formula controls perspiration, making this perfect for high energy performers such as clowns or dancers.

MP-2 Mini Shaker .9oz./25gm. TP-5 1.75oz./49gm. Shaker  
TP-6 3oz./85gm. Shaker TP-61 8oz./226gm. Jar

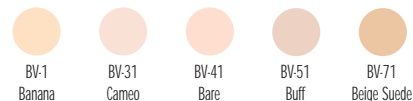
**Super White**  
Our only non-translucent powder contains bright white pigment to brighten *White, Geisha, Porcelain* and other very fair shades.

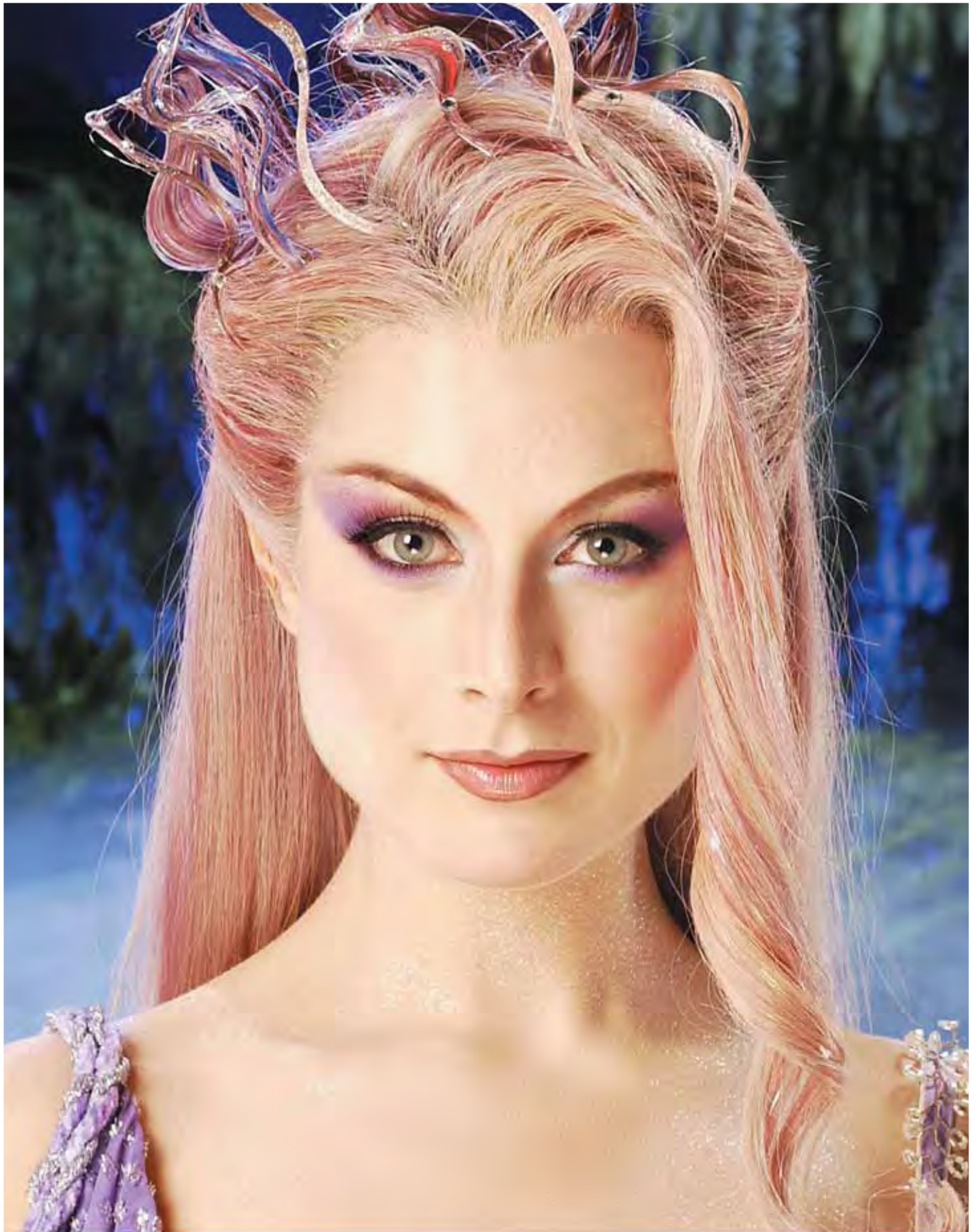
MP-3 Mini Shaker .9oz./25gm TP-7 1.75oz./49gm. Shaker  
TP-8 3oz./85gm. Shaker TP-81 8oz./226gm. Jar

## Visage Poudre *Luxury Powder*

Ultra-neutral powders provide superior matte and subtle finishing. Often compared to French powders with silky-fine textures. *Visage Poudres* are translucent with just a hint of color.

BV 1.5oz./42gm. Shaker Bottle; 3oz./85gm. Shaker Bottle.  
Expect 35-100 applications per ounce.





**Titania (Amanda Elliott)** • Base: CN-010 Très Clair, CN-0 Ultra, N-3 Buff • Neutralizer: MY-0 Mellow Yellow® Lite, MO-1 Mellow Orange® Fair • Rouge & Contours: CR-3 Sandy Rose Creme, CR-4 Raspberry Creme, LU-17 Cosmic Violet • Powder: Neutral Set Translucent • Eyes: LU-17 Cosmic Violet, LU-13 Royal Purple, LU-1 Ice, LU-4 Silver, ES-33 Mauvy, ES-332 Misty Lilac, CF-24 Misty Violet MagiCake, EP-90 Onyx Pencil, EL-1 Black Cake Liner • Brows: ES-80 Deep Violet, ES-33 Mauvy, ES-56 Espresso • Lips: LP-144 Rum Raisin Lip Colour Pencil, LS-42 Softshell Lipstick • Body: PC-30 Ecrú, PC-305 Barely Beige, LX-1 Ice • Hair: AG-9 Silver Prism Aqua Glitter •

# MAGI**CAKE**® AQUA PAINTS



Artists, designers and face painters delight in our sensational colors. Simply mix water into Cakes with a brush or sponge to create rich, creamy colors. The choices are unlimited.

## MagiCake Aqua Paints

MagiCakes are ideal for face painting, masquerade, fantasy and animal designs. The "Masquerade Kids" at left were created from our ensemble of 41 tantalizing shades. The exquisite detail for our "Patriot" body paint (page 19) was hand-painted with MagiCake. Apply with a flat brush or Hydra Sponge. Paints dry water-resistant and are easily removed with Hydra Cleanse Oil Free Remover, or soap and water. Hydra Cleanse is also an excellent brush cleaner for water-base makeup including MagiCake and Lumière colors. Personal Size: CF .21oz./6gm. Min. Wt.; Professional Size: LA .9oz./26gm. Min. Wt. Expect 25-50 applications per .21oz./6gm. container.



## MagiCake Palettes

Palettes in six and twelve colors provide the essentials to design virtually any makeup creation. Professional metal box is ideal for face painters and artists on-the-go. All forty-one shades are available as Refills. Empty six color Palette Box (BXE-6) and twelve color Palette Box (BXE-12) available to fill as you wish. Expect 150-600 applications per kit.

CFK-6 (Six Colors) .9oz./24gm. Net Wt. Shades: RM-1, RM-5, RM-7, RM-9, RM-112, RM-3.

CFK-12 (Twelve Colors) 1.7oz./48gm. Net Wt. Shades: Six shades listed above, plus RM-62, RM-108, RM-129, RM-16, RM-17, RM-195.

Refill: RM- (plus color code number) .14oz./4gm. Min. Wt.

*Application Tip: "Star Trek: Enterprise" Makeup Artist, Brad Look, wrote this helpful tip in Makeup Artist Magazine: To create hand makeup for aliens, blend Final Seal with MagiCake or Color Cake. Pour two ounces of Final Seal into an electric blender and cover. Press "Liquefy", then drop pieces of a cut up Cake (1oz./28gm.) through hole in the lid. Blend to a smooth consistency. Store in a tightly capped bottle. Formula can be airbrushed or applied with a sponge on face and body. Brad received an Emmy for his work on "Star Trek: Voyager".*



## MagiCake Aqua Paints

					
CF-1 Cloud White	CF-3 Licorice Black	CF-4 Fire Red	CF-5 Bright Red	CF-52 Cranberry	CF-6 Calypto Blue
					
CF-61 Stormy Blue	CF-62 Cosmic Blue	CF-65 Marine Blue	CF-7 Azure Blue	CF-8 Turquoise	CF-81 Tahitian Blue
					
CF-82 Seafoam	CF-89 Maize	CF-9 Sunshine Yellow	CF-10 Marigold	CF-102 Mustard Seed	CF-104 Burnt Pumpkin
					
CF-108 Lime Green	CF-110 Gecko Green	CF-11 Emerald Green	CF-112 Kelly Green	CF-12 Tropical Green	CF-122 Split Pea
					
CF-129 Royal Purple	CF-13 Vivid Violet	CF-135 Light Lavender	CF-14 Magenta	CF-15 Passion Pink	CF-16 Hot Pink
					
CF-165 Bazooka Pink	CF-17 Bright Orange	CF-19 Rust	CF-195 Honey Brown	CF-20 Subtle Brown	CF-21 Warm Brown
					
CF-22 Character Shadow	CF-23 Grey	CF-24 Misty Violet	CF-25 Ultra Lite	CF-251 Linen	CF-26 Brown-Black

# MAGICOLOR® PAINT & GLITTER

Let your imagination run wild! Paint with this gorgeous array of MagiColor Liquid Paints and sparkling Glitters. Acclaimed by face painters and makeup artists for beauty, brilliance and durability.



## MagiColor Liquid Face Paints

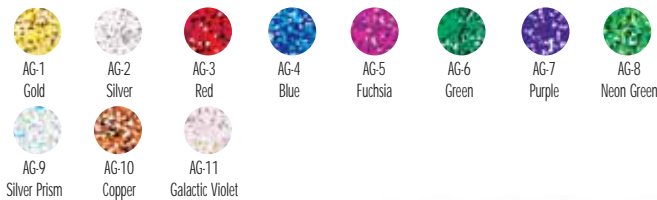
MagiColor Paints are beautifully designed with an incredible color range. Highly pigmented, paints dry quickly to a smudge and water-resistant finish. Apply with brush, sponge or airbrush. If desired, thin paints with 10% Final Seal for airbrush.

ML 1fl.oz./29ml.; Refill 4fl.oz./118ml. Expect 20-70 applications per ounce.



## Aqua Glitter

Dazzling details for just about any occasion. Just shake and apply over makeup, or directly to face, hair and body. Dries to a flake-resistant finish. Brush applicator included, or use Silicone Tool (page 29) for precise details. AG 1fl.oz./29ml. Expect 20-60 applications.



## Glitz It Glitter Gel

Like a galaxy of sparkling diamonds, Glitz It combines holographic Opal Ice glitter in an invisible gel that quickly dries to a matte finish. Irresistible effects for face, hair and body. GG 1oz./28gm. Expect 3-50 applications.



## Sparklers Glitter

Glow with glitter on the face, hair, nearly everywhere. Press Sparklers into unpowdered creme makeup, or sprinkle into Glitter Glue or lightly sprayed LiquiSet Sealer. Small MD container includes a convenient plug filament. Apply with Tapered Point Brush for precise application or Bulb Applicator for all-over sparkle. MD .14oz./4gm.; LD .5oz./14gm. Expect 10-50 applications per MD container.



# CLOWN MAKEUP

Professionals, such as *The Jokesters* and *Gator the Clown*, tell us they look their best with Ben Nye Clown Makeup. Products and colors are specifically designed to keep these busy performers at their brightest whenever they entertain.



## Clown White

Our highly pigmented stunning white formula is a favorite among professionals. Active clowns prefer *Clown White's* soft, easy to apply texture and bright, long-wearing finish. Expect 5-10 faces per ounce.

CW-1 .65oz./18gm. CW-3 2.25oz./63gm. CW-5 16oz./454gm.  
 CW-2 1.75oz./49gm. CW-4 8oz./227gm.



## Clown White Lite

Great for performers who prefer a lighter texture and bright white finish. Many clowns say it holds up to wrinkles and remains durable under hot, humid conditions. Expect 75-125 full faces.

FP-102 1oz./28gm. FP-202 2.5oz./70gm.

## Professional Clown Series

Busy entertainers favor our large, economically priced *Pro Clown Series*. Creme shades are easy to apply and richly pigmented for long wear. Packaged in attractive clear container. FP 1oz./28gm. Expect 75-125 full faces.



**Bright Color (BB) Series** Our most popular *Creme Color* shades in traditional foundation size. Highly pigmented for endurance and brilliance.

BB .5oz./14gm. Expect 30-50 applications.

Refer to *Creme Color Chart* (page 3) for color match.

BB-2 Grey (CL-26) BB-6 Blue (CL-19) BB-81 Kelly Green (CL-211)  
 BB-4 Fire Red (CL-13) BB-7 Purple (CL-18) BB-9 Yellow (CL-5)  
 BB-5 Orange (CL-7) BB-8 Green (CL-3)

## Character Wheels

Create any character with just a spark of imagination and our indispensable *Character Wheels*. Two to four shades each. WK .5oz./14gm. Expect 24-100 designs per Wheel.

### Clown

WK-11: CL-29, CL-13, CL-191, CL-5.

### Vampire

WK-21: CL-1, CL-29, CL-25, CL-15.

### Witch

WK-31: CL-25, CL-2, CL-5, CH-0.

### Dark Phantom

WK-41: CL-13, CL-29.

### Dark Phantom

WK-41: CL-13, CL-29.

### Special Effects

WK-45: CL-25, CL-14, CH-0, CL-5.

### Skeleton

WK-61: CL-1, CL-29, CL-6, CL-131.

### Cat/Lion

WK-71: CL-1, CL-29, CL-9, CL-6.

### Ghoul

WK-91: CL-29, CL-17, CH-0.



## Clown Creme Palette

Each kit includes clown favorites and a useful flat brush. *Creme Palette Refills* are available for each kit shade as shown below. LKP-2 1oz./28gm. Net Wt.

Shades: RCL-1, RCL-13, RCL-19, RPP-10, RPP-101, RCL-29. Expect 75-300 applications per kit.



# FACE PAINTING



## Aqua Crayons by Johnny Brown

Face painting made easy with colorful pop-up crayons. Gentle formula mixes quickly with water. Easy clean-up with soap and water. Fun and easy for all.

Expect 150-250 designs per Kit.

AC-1 Six Crayon Pack

AC-2 Ten Crayon Pack



## Primary Creme Face Painting Palette

*Primary Creme Palette* includes six essential paint shades for face, character or body painting. Kit includes a useful flat brush. *Creme Palette Refills* are available for each standard shade as shown below. LKP-1 1oz./28gm. Net Wt. Shades: RCL-1, RCR-01, RCL-19, RCL-5, RCL-211, RCL-29. Expect 75-300 designs per Kit.

## MagiColor Creme Pencils

Our pencil texture is creamy without being too soft.

Resplendent color selection for clowning, face painting, animal and fantasy. For a "fine point", use our *Single Hole Pencil Sharpener*.

MC .04oz./1.13gm.

Expect 30-75 applications.



## Creme Color Stack

Primary color assortment for professional convenience and versatility. Non-toxic and washable.

SP-100

.85oz./25gm. Net Wt.

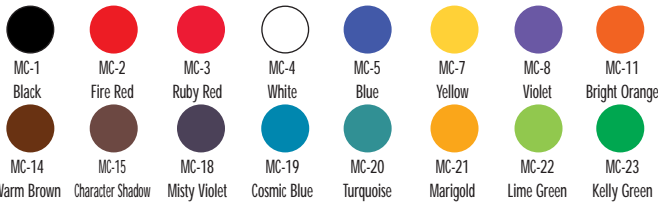
SP-1, SP-2, SP-3, SP-4, SP-6.

Expect 20-175 designs per stack.



## Creme Color Stack-Ups

Complete every makeup assignment with class. Our *Creme Colors* are conveniently packaged in handy stackable pots. Collect them as you like, or use the assembled *Stack* above. SP .17oz./5gm. Expect 4-35 designs per shade.



## Lip Colors

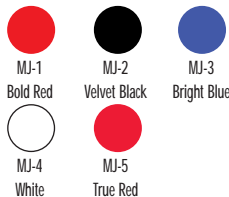
Every color in this series is a classic, including *Natural* and *Vixen*, designed for *Cirque du Soleil*®. Pots may be combined to form a convenient stack.

LC .17oz./5gm. Expect 25-75 applications.



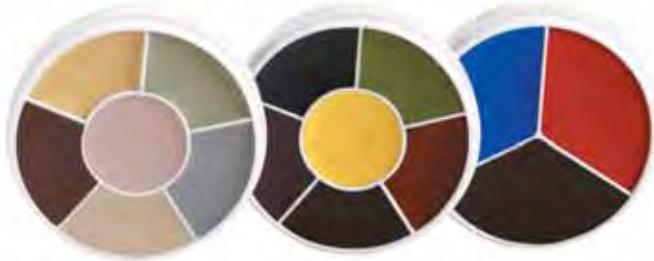
## MagiColor Creme Crayons

Our *Creme Crayons* pack a lot of punch... and a load of color! Perfect for well placed strokes, and voila, your design is complete. Good for fast touch-ups, too. Shape up with our *Dual Hole Sharpener*. MJ .05oz./1.4gm.-.089oz./2.5gm. Expect 30-75 applications.



# EFFECTS WHEELS & COLORS

*Ben Nye, Sr. had an exceptional eye for detail that made a makeup design come alive. His exceptional colors and products have become industry standards for artists throughout the world. Many of these colors and products can be found below.*



## Professional Wheels

Wheels offer exceptional character realism. Intense pigmentation in a smooth creme formula for consistent application, blending, versatility and durability. 1oz./28gm.

**Rainbow Wheel** Six principle colors for great variety.

RW CL-29, CL-13, CL-3, CL-5, CL-7, CL-19. Expect 50-240 designs.

**Red White & Black** Clown, mime and versatile design shades.

RB FP-102, CR-1, CL-29. Expect 25-150 designs.

**Monster Wheel** For shadowy ghosts, ghouls, witches and vampires.

MW CL-1, CL-15, CL-17, P-14, P-15, P-16. Expect 30-120 designs.

**Death Wheel** (pictured above left) Six popular shades execute the extreme effects of death.

DW P-21, P-22, P-19, P-17, P-20, P-18. Expect 50-240 designs.

**Master Bruise Wheel** (pictured above center) Design a multitude of realistic injuries with these six exceptional creme colors.

EW-4 FX-11, CL-14, FX-5, CL-18, FX-7, CL-5. Expect 30-120 designs.

**Bruise & Abrasions Wheel** Four shades for scrapes and bruising.

EW-41 CL-6, CL-15, CL-17, CL-131. Expect 30-120 designs.

**Trauma Simulation** (pictured above, right) Simulate fresh scrapes, wounds and injuries with three useful shades.

EW-7 CL-13, FX-5, CL-19. Expect 25-150 designs.

**Camouflage Wheel** Industrial shades, ready to blend into any terrain.

KW CL-11, CL-31, CL-61, CL-28. Expect 30-80 designs.

**Bald Cap Stipple Wheel** Simulate skin texture on latex appliances.

Produce capillaries, freckles, follicle shadows and subtle pore highlights. EW-9 CL-21, CL-25, FX-13, MY-2. Expect 60-200 designs.



## Remembering A Mentor

*Bruce Hutchinson has worked in Hollywood for over 40 years and learned his craft from Ben Nye, Sr. Bruce once said of his mentor, "Ben was a very exacting artist. He had great instincts for color and detail."*

*Bruce's credits include Laverne & Shirley, Happy Days, Cheers and Frasier. With the finale of Frasier, Bruce bid farewell to a career that has given him much personal satisfaction. All at Ben Nye fondly thank Bruce for his many contributions to makeup artistry.*



## F/X Color Wheels

Compact *Wheels* have always been a creative resource for artists who design burns, bruises, aging or other special effects. Expect 50-300 designs per .5oz./14gm. Wheel.

**Bruises** CK-1: FX-5, FX-7, FX-11, CL18

**Cuts & Bruises** CK-3: FX-10, CL-14, CL-5, CL-2

**Bruise & Abrasions** CK-4: CL-6, CL-15, CK-17, CL-131

**Burns & Blisters** CK-5: FX-1, FX-4, FX-3, CL-13

**Age Stipple** CK-7: FX-13, FX-15, FX-17, FX-19

**Severe Exposure** CK-9: FX-13, CL-10, CL-13, CR-2

**Old Character** CK-11: CH-0, CL-17, FX-13, CS-3

**Old Character II** CK-13: SC-3, CS-6, CL-15, CL-17

**Camouflage** CK-15: CL-31, CL-61, CL-11, CL-28



## F/X Creme Colors

Creme effects are so versatile. High pigment content and creamy texture makes control a simple matter. Creme blends together easily, and remains steadfast against harsh elements.

FX .3oz./8.4gm. Expect 15-100 applications.



## Creme Character Bases

Over the years, Ben Nye, Sr. designed a nearly endless cast of remarkable looking characters. Today, anyone can turn heads with these eight unique character shades. CB .5oz./14gm. Expect 10-35 designs.



# HAIR & CHARACTER EFFECTS



## Liquid Hair Colors

Ben Nye, Sr. pioneered *Silver Grey Hair Color* and it still has the right balance between silver and grey, appearing realistic for stage and film. Apply with a toothbrush, and style easily without the stiffness associated with spray hair colors. Avoid use on chemically treated hair. Test before use. Expect 3-10 applications per ounce.

*Application Tip: To temporarily hide a bald spot, apply Liquid Hair Color with a Stipple Sponge or brush. Gently paint texture onto scalp and allow to dry. Color will dry matte and smudge-resistant. Remove with Hydra Cleanse or shampoo and water.*

- Silver Grey** Our original age hair color. Realistic silvery-grey age tone with subtle metallic highlights.
 

HG-1 1fl.oz./29ml.	HG-3 8fl.oz./236ml.
HG-2 2fl.oz./59ml.	HG-4 16fl.oz./473ml.
- Dark Grey** Recently revised, this shade is now a true deep grey.
 

DG-2 2fl.oz./59ml.	DG-3 8fl.oz./236ml.
--------------------	---------------------
- Taupe** Subtle neutral brown adds dramatic contrast to white and grey hair.
 

TH-2 2fl.oz./59ml.	TH-3 8fl.oz./236ml.
--------------------	---------------------
- Auburn** Rich, warm red-brown tone.
 

AH-2 2fl.oz./59ml.	AH-3 8fl.oz./236ml.
--------------------	---------------------
- Dark Brown** Rich, natural dark brown for blending or an all-over change.
 

BH-2 2fl.oz./59ml.	BH-3 8fl.oz./236ml.
--------------------	---------------------
- Snow White** Use to age dark brown or black hair. Streak into *Silver Grey* or *Dark Grey* to brighten highlights. Excellent for Santa's beard and brows.
 

HW-1 1fl.oz./29ml.	HW-3 8fl.oz./236ml.
HW-2 2fl.oz./59ml.	HW-4 16fl.oz./473ml.
- Midnite Black** Completely blackens hair for dramatic effects. Caution: Black hair coloring may smudge. Avoid contact with hands and costuming.
 

MB-1 1fl.oz./29ml.	MB-3 8fl.oz./236ml.
MB-2 2fl.oz./59ml.	MB-4 16fl.oz./473ml.



## Crepe Wool Hair

This woolen fiber has been used for the past century to create beards, sideburns and mustaches. We offer eighteen shades in one-yard lengths, sufficient to lay several beards. Makeup Artist, Web Phillips, demonstrates hair laying techniques in our instructional video, "How to Lay a Crepe Beard" (see page 27 for details).

WH 1 yard/36"/91.4cm. Will yield up to 4 moderate length beards.

- |                       |                    |                   |
|-----------------------|--------------------|-------------------|
| WH-1 White            | WH-9 Lite Brown    | WH-16 Rusty Red   |
| WH-2 Lite Blond       | WH-10 Medium Brown | WH-17 Scarlet Red |
| WH-3 Ash Blond        | WH-11 Brunette     | WH-19 Lite Grey   |
| WH-4 Strawberry Blond | WH-12 Dark Brown   | WH-20 Medium Grey |
| WH-6 Lite Auburn      | WH-14 Orange       | WH-21 Dark Grey   |
| WH-7 Dark Auburn      | WH-15 Ginger       | WH-22 Black       |

## Character Powders

**Plains Dust** Looks like real dirt. The brown stuff. Clings to the skin, but washes off easily. Test on fabric before use. Expect 10-20 applications per ounce.

MP-4 .75oz./21gm. Mini Shaker  
PD-1 4.5oz./127gm. Jar  
PD-2 10oz./283gm. Jar



**Ash Powder** Subtly distresses face, body or costumes in a pale dust tone. Synthetic and washable; also known as Fuller's Earth. Test on fabric before use. Expect 10-20 applications per ounce.

MP-8 1oz./28gm. Mini Shaker  
AP-1 6oz./170gm. Jar  
AP-2 14oz./396gm. Jar

**Charcoal Powder** Smudge on the face for that classic "grease stain". Rub into cuticle, knuckles, and fingers for greasy skin. Lightly apply around a wound for powder burns. Test on fabrics before use. Expect 10-20 applications per ounce.

MP-5 .75oz./21gm. Mini Shaker  
CM-1 4.5oz./127gm. Jar  
CM-2 10oz./283gm. Jar

## Bronzing Body Tint

Originally made popular by Yul Brynner who wore it for both the movie and stage versions of "The King and I". Apply with *Hydra Sponge*. Water-resistant. Remove with *Hydra Cleanse* or cleanser and water. Expect 3-8 applications per ounce.

BT-1 2fl.oz./59ml.  
BT-2 8fl.oz./236ml.  
BT-3 16fl.oz./473ml. Jug



## Black Light Makeup Pen

Fine tip pen applies transparent "ink" directly on skin or over sealed makeup. Lights up instantly beneath black light, invisible under normal light. Great for live action, haunted house, laser tag, neon bowling or clubbing. FDA approved. Waterproof and perspiration resistant. BKP-1 .06fl.oz./1.7ml. Expect 10-25 applications.

## Portable Flashlight

Black light, plus regular flashlight. BKF. Requires 4 AA batteries (not included).

## Tooth Colors

*Tooth Black* has long been a staple in theatre and film to add just the right dimension to character makeups. Ben Nye's *Tooth Colors* dry quickly and last for hours. Colors remove with toothpaste or rubbing alcohol on swab. .25fl.oz./7ml. Expect 20-100 teeth.



TC-0 Natural White  
TC-1 Black  
TC-2 Nicotine  
TC-3 Zombie Rot  
TC-4 Decay

## Glycerin

Keep handy to simulate tears, perspiration or "oozing" from wounds. Caution: Keep out of eyes. Expect 10-60 applications per ounce.

GL-2 2fl.oz./59ml.  
GL-8 8fl.oz./236ml.

# BLOOD & LATEX



## Blood Effects

**Stage Blood** Many feature films have used our blood exclusively. Realistic qualities include vivid coloring and medium flowing viscosity. Peppermint flavored and safe in mouth. May stain some fabrics and surfaces; test before use. Expect 12-30 applications per ounce.

SB-2 .5fl.oz./14ml. SB-45 4fl.oz./118ml. SB-6 16fl.oz./473ml. Jug  
 SB-3 1fl.oz./29ml. SB-5 8fl.oz./236ml. SB-7 32fl.oz./946ml. Jug  
 SB-4 2fl.oz./59ml.

**Complete Blood Pack** Fill these gelatin capsules with *Stage Blood* several hours before use. Bite into capsules, and let the blood flow. GB-0 Twelve Capsules, .5fl.oz. *Stage Blood*.

**Gelatin Blood Capsules** Open capsule, and fill one half full with blood. Capsules hold their shape even if not used for several days. Place in mouth and bite down to release blood.

GB-1 10 Capsule Pack GB-2 32 Capsule Pack

**Thick Blood** Moist, jam-like texture can be used to fill wounds. "Scrape" along skin with a stipple sponge for an abrasion or road rash. Washable. Expect 10-35 applications per ounce.

TB-0 .5oz./14gm. TB-2 6oz./170gm.  
 TB-1 1oz./28gm. TB-3 16oz./454gm.

**Fresh Scab** Authentic brownish-blood tint for older, dried blood clotting effects. Blood doesn't completely "set", but the outer layer "scabs over". Washable. May stain some fabrics; test before use. Expect 10-35 applications per ounce.

TS-1 1oz./28gm. TS-2 6oz./170gm. TS-3 16oz./454gm.

**Effects Gel Wound Kit** Design durable and realistic lacerations, burns, wounds and scars with this useful pack of gels. Wounds may be pre-made. Detailed instructions included. Available in 1oz. or 2oz. sets of *Blood*, *Scar* and *Flesh*.

GE-10 Three 1fl.oz./29ml.  
 Bottles; GE-11 Three  
 2fl.oz./59ml. Bottles  
 Expect 30-50  
 applications  
 per ounce.



**Effects Gels** Useful, realistic colored gels produce durable self-made wounds, cuts, burns and scars. Warm until gel turns to a liquid. Create wound and allow to "set" as it cools. Shades: *Blood*, *Flesh (Clear)*, *Scar*. Expect 3-50 applications per ounce.

GE-1 Blood 1fl.oz./29ml. GE-3 Flesh 1fl.oz./29ml. GE-5 Scar 1fl.oz./29ml.  
 GE-2 Blood 2fl.oz./59ml. GE-4 Flesh 2fl.oz./59ml. GE-6 Scar 2fl.oz./59ml.



**Nose & Scar Wax** Our modeling wax is pliable, yet firm, to create simulated injuries such as a bullet hole or broken nose. Available in translucent tones *Fair* and *Brown*. *Spirit Gum* beneath wax provides longer wear. Seal with *Liquid Latex*.

Expect 4-25 applications per ounce.

Fair  
 NW-1 1oz./28gm. NW-3 8oz./226gm. BW-1 1oz./28gm. BW-3 8oz./226gm.  
 NW-2 2oz./56gm. NW-4 16oz./453gm. BW-2 2oz./56gm. BW-4 16oz./453gm.



## Prosthetic Effects

**Bald Cap** We offer an excellent latex bald cap made by Woochie Labs. Watch our video, "*How to Apply a Bald Cap*", to perfect application (see page 27). Apply with *Spirit Gum*, contour edges with *Liquid Latex*. Reusable. BP-0

**Liquid Latex** Multi-functional. Apply to stretched skin for aging, extreme blisters and wounds. Excellent for sealing *Nose & Scar Wax* or to mold prosthetic appliances. Fair flesh tone dries almost transparent. Expect 8-20 applications per ounce.

LL-1 1fl.oz./29ml. LL-25 4fl.oz./118ml. LL-4 16fl.oz./473ml. Jug  
 LL-2 2fl.oz./59ml. LL-3 8fl.oz./236ml. LL-5 32fl.oz./946ml. Jug

**Clear Latex** Possesses identical qualities as *Liquid Latex*, without coloring. Expect 8-20 applications per ounce.

LR-1 1fl.oz./29ml. LR-25 4fl.oz./118ml. LR-5 32fl.oz./946ml. Jug

**Latex for Sensitive Skin** Low ammonia formula for extremely dry or sensitive skin. Expect 8-20 applications per ounce.

LL-52 2fl.oz./59ml. LL-55 32fl.oz./946ml. Jug

**Wrinkle Stipple** Specialty latex is thinner than *Liquid Latex* and dries nearly invisible. Ideal to create subtle facial wrinkling, especially crow's feet. Apply *Castor Sealer* to prevent discoloration before creme makeup is applied. Expect 8-35 applications per ounce.

WS-1 1fl.oz./29ml. WS-2 2fl.oz./59ml.

**Castor Sealer** Ideal for all slip rubber and latex materials. Eliminates the need for rubber mask grease and prevents discoloration when creme makeups are applied. Expect 15-40 applications per ounce.

KS-00 .5fl.oz./14ml. KS-1 2fl.oz./59ml.  
 KS-0 1fl.oz./29ml. KS-2 8fl.oz./236ml.

# ADHESIVES, SEALERS & CLEANSERS

*Details, small and large, are important to makeup artists and hair stylists. Adhesives, Sealers and Cleansers are vital to most every character. Ben Nye's quality and product selection is unsurpassed in the industry.*

## Adhesives & Removers

**Glitter Glue** Keep glitter, such as *Sparklers* or sequins, firmly in place. Alcohol base and water-washable. AGB 1fl.oz./29ml. Expect 20-75 applications per ounce.

**Spirit Gum Adhesive** Our sticky adhesive dries to a flat finish and keeps lace beards, hair pieces and prosthetic appliances attached firmly. Tap adhesive until "tacky" before use. Remove from skin, hair pieces and prosthetics with *Spirit Gum Remover*, *Bond Off!* or *Remove-It All*. Expect 4 applications per .25 ounce.

SG-1 .25fl.oz./7ml	SG-3 8fl.oz./236ml.
SG-2 1fl.oz./29ml.	SG-4 16fl.oz./473ml. Jug
SG-25 4fl.oz./118ml.	

**Prosthetic Adhesive** Apply this durable adhesive to securely bond prosthetic appliances, such as latex ears or clown noses. Durable against perspiration. Remove with *Remove-It All*. Expect 15-35 applications per ounce.

AD-1 1fl.oz./29ml.	AD-3 4fl.oz./118ml.
--------------------	---------------------



**Spirit Gum Remover** Quickly dissolve the sticky residues of *Spirit Gum Adhesive* with this effective remover. Follow with *Hydra Cleanse* or soap and water. Expect 3-15 applications per ounce.

GR-1 .5fl.oz./14ml.	GR-25 4fl.oz./118ml.
GR-2 1fl.oz./29ml.	GR-3 8fl.oz./236ml.
GR-22 2fl.oz./59ml.	GR-5 32fl.oz./946ml. Jug

**Bond Off! Remover** Thoroughly cleans *Spirit Gum*, *Medical Adhesive* and similar residues from skin and appliances. Follow with *Hydra Cleanse* or soap and water. Expect 5-15 applications per ounce.

BR-0 .5fl.oz./14ml.	BR-2 8fl.oz./236ml.
BR-1 2fl.oz./59ml.	BR-4 32fl.oz./946ml. Jug
BR-15 4fl.oz./118ml.	

**Remove-It All** Our newest remover contains universal solvents that make it indispensable as a cleanser to gently and efficiently remove all creme makeups, *Spirit Gum Adhesive*, *Medical Adhesive* and *Prosthetic Adhesive*. Non-hazardous, color and perfume free. Expect 15-50 applications per ounce.

RR-2 2fl.oz./59ml.	RR-32 32fl.oz./946ml. Jug
RR-8 8fl.oz./236ml.	



## Makeup Sealers

**Final Seal Matte Sealer** Apply over any completed makeup for a smudge and water-resistant finish. *Final Seal* keeps makeup in place even on performers who perspire heavily. Add to *Liquid Paints* (about 10%) for greater durability. Airbrush artist, Mark Frazier, used *Final Seal* as a base coat before airbrushing "Patriot" with *MagiColor Liquid Paint* (see page 19). Take precaution around eye area and on sensitive skin. Remove with *Hydra Cleanse*. Mint fragrance. Expect 20-50 applications per ounce.

FY-0 1fl.oz./29ml. Spray	FY-8 8fl.oz./236ml. Refill
FY-2 2fl.oz./59ml. Spray	FY-16 16fl.oz./473ml. Jug

**LiquiSet Mixing Liquid** Water-base *LiquiSet* easily mixes with *MagiCake Aqua Paints*, *Lumière Colours*, *Color Cake* and *Cake Eye Liner* for a smudgeproof and water-resistant finish. Mix with *Lumière Luxe Powders* to create a beautiful luminescent paint (page 13). FYI: Colors applied with *LiquiSet* will not blend. Expect 10-40 applications per ounce.

LQ-0 1fl.oz./29ml. Spray	LQ-2 2fl.oz./59ml.	LQ-4 4fl.oz./118ml.
LQ-1 1fl.oz./29ml.	LQ-21 2fl.oz./59ml. Spray	LQ-16 16fl.oz./473ml. Jug

## Cleansers

**Hydra Cleanse** Gently cleanses face and body, leaving the skin feeling clean, smooth and refreshed. Removes impurities before makeup application, and most light-textured makeups. Cleans water-base makeup residue quickly from brushes. Oil and fragrance free. Expect 15-50 applications per ounce.

HR-1 2fl.oz./59ml.	HR-21 8fl.oz./236ml. Pump
HR-2 8fl.oz./236ml.	HR-3 16fl.oz./473ml.



**Quick Cleanse** Light, gentle formula easily removes all creme makeups. Gently massage cleanser into makeup with cotton pad, fingers or sponge and wipe away. Rinse skin with water. Expect 4-20 applications per ounce.

QR-1 .5fl.oz./14ml.	QR-3 2fl.oz./59ml.	QR-41 8fl.oz./236ml. Pump
QR-2 1fl.oz./29ml.	QR-4 8fl.oz./236ml.	QR-5 16fl.oz./473ml. Jug

**Brush Cleaner** Effective cleaning solution quickly dissolves all oil-based makeup. Available in convenient spray bottle for quick cleaning without disposal issues. Pleasant scent. Alcohol base. Use in well ventilated area. Cleans approximately 75 brushes per ounce.

BC-1 2fl.oz./59ml.	BC-2 8fl.oz./236ml.	BC-3 16fl.oz./473ml. Jug
BC-11 2fl.oz./59ml. Spray	BC-21 8fl.oz./236ml. Pump	BC-4 32fl.oz./946ml. Jug

# MAKEUP BRUSHES



## Flat Brushes

Expertly blend *Cremes*, *MagiCake Aqua Paint* and *Lumière Grande Colours* with these synthetic fiber brushes which closely resemble the "snap" of sable hair. Taklon offers easy clean-up and long-life.

Golden Taklon

FB-2 No. 2 - 3/32"	FB-7 No. 7 - 5/16"
FB-3 No. 3 - 5/32"	FB-10 No. 10 - 3/8"
FB-5 No. 5 - 1/4"	FB-12 No. 12 - 7/16"



## Pencil Sharpeners

We recommend the single hole unit for a sharp pencil point. The *Dual Hole* unit sharpens both *Pencils* and *Crayons*.

SP Single Hole Sharpener  
DP Dual Hole Sharpener



## Angle Brushes

Precise angled application for eye shadow, eye liner, brow coloring and lipstick. Golden Taklon

AB-4 Medium	AB-8 Wide
-------------	-----------



## Dome Brushes

Subtle, delicate brush for eye shadow application or under eye concealing. Rounded corners provide soft edges.

Golden Taklon

DB-8 Medium	DB-12 Wide
-------------	------------



## Round Brushes

Use the RS-1 and RS-2 to expertly line eyes, etch brows or apply fine details with *Liquid* or *MagiCake Paints*.

RS-0 is Sable, RS-1 and RS-2 are Golden Taklon

RS-0 No. 0 Extra Fine Point	RS-2 No. 2 Small Point
RS-1 No. 1 Fine Point	

**Application Tip:** Many artists use *Brush Cleaner* to efficiently remove creme makeup from brushes. To quickly clean water-base makeup from brushes, such as *MagiCake Aqua Paints* or *Lumières*, use *Hydra Cleanse* oil-free remover (page 25). To easily dissolve intense pigments, swirl brush in *Hydra Cleanse*. Rinse in water and allow to thoroughly dry before storage.



## Fine Detail Brushes

Petite Powder

A great shape for applying *Luxe Powders*, glitter, powder or pressed colors to face and eyes. FDB-1 / Pony

## Tapered Point Brushes

For blending and contouring of eye shadows, *Lumière*, powders and glitter. FDB-2 Medium, FDB-3 Small / Pony Blend

Petite Shader

Small round-edged brush for delicate powder detailing. FDB-4 / Ox Blend

## Medium Blender

Soft, but firm chiseled-edge bristles for precise, even finish of powders. FDB-5 / Sable

## Lip Brushes

Finely tapered, petite shape for defined application of lip colors and glosses. FDB-7 Lip Brush with Cover, FDB-71 Compact Lip Brush (not pictured) / Takalon



## Rouge Brushes

Angle Contour

Great for touch-ups and precise application of face powders, glitters, rouge or shadows. RB-4 / Goat Blend

Touch-Up

Beveled shape for precise powder application, especially useful around eye area. RB-3 / Goat Blend

## Professional Rouge

Generous, full shape provides quick application of powders to face and body. RB-2 / Goat Blend

## Powder Brush

Luxurious hair deftly adds powder or gently removes excess without disturbing makeup. PA-1 / Goat Blend

# SPONGES & MAKEUP TOOLS



(clockwise from upper left) Stipple Sponge, Powder Puff, Foam Sponge, Hydra Sponges.

## Sponges and Puffs

### Velour Powder Puffs

Soft, luxurious puff for powder. Washable.

VP-1 Single Lot      VP-2 Dozen Pack

### Foam Sponge

Our finely textured sponge is ideal for applying and blending creme makeup. 3" x 4" block is die cut into eight wedges. Synthetic. Disposable.

LF-1 Single Lot      LF-2 Dozen Pack

### Hydra Sponge

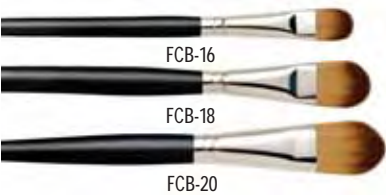
Durable synthetic sponges efficiently spread *Color Cake* and *MagiCake*. Medium size is optimum for body makeup. Wash thoroughly with antibacterial soap after use; allow to dry completely before storing.

HS-1 Small      HS-3 Medium

### Nylon Stipple Sponge

Use to create texture to makeup. Cut the 3" x 4" block into small sections; trim hard edges of sponge to avoid harsh edges. Especially useful with *Latex*, *Waxes*, *Cremes* and *Bloods* to create beard stipple, bruising, road rash and texturing. Disposable.

NS-1 Single Lot      NS-2 Dozen Pack



## Foundation and Contour Brushes

All-purpose, round-edged design efficiently applies creme foundations, *MagiCake* and *Lumières*. Golden Taklon

FCB-16 Medium      FCB-18 Wide      FCB-20 Foundation



## Sponge Applicators

Super absorbent, wet or dry application of eye shadows, *Lumière Grande Colour* or *MagiCake Aqua Paints*. Rubycell (Sponge)

FPB-12 Medium      FPB-14 Wide



## Silicone Tool

Flat chisel design is non-porous, resilient and flexible. Great for detailed application of *Aqua Glitter*, latex, blood, adhesives or cremes. Wipes clean. ST-3 3/8" (5mm) Wide, Double Sided Flat Chisel

## Stainless Steel Spatula

Use to mix makeup on a palette or apply and sculpt *Nose & Scar Wax*, *Thick Blood* or *Gel Effects* to skin. ST-1 7" (3.5"/9cm Blade)

## Wooden Modeling Tool

Versatile application tool to model *Nose & Scar Wax*, *Thick Blood* and *Effects Gels*. MT-1 Natural Wood

## Brow/Lash Comb

Use to separate lashes, style brows or streak facial hair and temples with hair color for aging. EC

## Personal Rouge Brush

Full bristled, short-handled personal size rouge brush. RB-11 / Goat



## Artist's Mixing Palette

Useful palette offers a large surface area with a convenient finger hole. Sanitize with alcohol. MXP-2 5.5" x 6.5" White Plexiglas

## Stainless Steel Mixing Palette

Convenient for custom blending of colors. Apply makeup from *Palette* rather than container for hygiene purposes. MXP 3.5" x 5".

## Foam Tip Applicators

Soft foam tipped applicator to apply eye shadows and *Lumière Grande Colours*. Washable or disposable.

FB-11 10 Pack      FB-111 25 Pack

## Swab Applicators

These cotton-tipped, disposable applicators have 1,001 uses. One pointed end, one round tip. SW-11 Pack of ten.



## Instructional DVD - The Classic Series: "Makeup for the Theatre"

Expert makeup instructors clearly demonstrate the fine points of makeup artistry. Six lessons are designed for classroom instruction (approximately 50 minutes per lesson) with detailed summaries at the conclusion of each. Bonus feature: Retrospective on Ben Nye, Sr.'s makeup artistry career. Closed captioned.

Six lessons include:

Basic Corrective Male  
Old Age Character  
How to Apply A Bald Cap

Corrective Beauty for Female  
3-D Special Effects  
How to Lay A Crepe Wool Beard

# CREME & CAKE MAKEUP KITS

*Ben Nye manufactures some of the most comprehensive makeup kits in the industry. Instructors, makeup artists and performers rely on our Kits for their practicality, quality and excellent value.*



Throughout his travels, Dana often demonstrates the versatility and usefulness of Ben Nye products to artists and instructors. Here he visits with makeup artists in Oslo, Norway.



TK-1 Fair: Light-Medium Creme Kit Components

## Creme Makeup Kit

*Creme Kits* are a standard for class and production. Products are intensely pigmented, easy to blend and provide exceptional design options.

The series contains a contemporary selection of creme foundations, rouges, highlights and shadows formulated in a richly pigmented, velvety texture. Creme makeups are gentle, even for individuals with sensitive skin.

Six specific skin tone combinations are offered, including two new, improved brown kits for performers of color.

Component selection based on skin tone: Three Creme Foundations, Creme Contour Wheel (Cheek Rouge, Lip Color and two Creme Colors), Bruise & Abrasions Wheel, Highlight, Shadow, White Creme Color, Powder Cheek Rouge, Eyebrow Pencil, Lip Pencil, Black Pencil, Liquid Latex, Nose & Scar Wax, Hair Color, Translucent Face Powder, Spirit Gum Adhesive, Spirit Gum Remover, Stage Blood, Rouge Brush, Velour Powder Puff, Sponge Applicators, Stipple Sponge, No. 3 Flat Brush, No. 7 Flat Brush, Eyebrow/Lash Comb, Swab Applicators.

Quality components in generous full sizes cover straight, beauty, old age and special effects makeups. Expect ample makeup for dozens of applications for instruction and theatrical productions.

Many of Ben Nye's distinctive specialty products are included, such as *Stage Blood, Liquid Latex, Nose & Scar Wax, Translucent Face Powder, Hair Color* and more. Professional quality brushes, sponges, powder puff and pencils assure expert application. Consult your local dealer for pricing.

Select from the following Kits:

TK-1 Fair: Light-Medium	TK-3 Olive: Light-Medium	TK-6 Brown: Light-Medium
TK-2 Fair: Medium-Tan	TK-4 Olive: Medium-Deep	TK-7 Brown: Medium-Dark

## Cake Makeup Kit

*Cake Makeup Kits* offer a range of products including creme contours, *MagiCake Aqua Paint* contours, a classic collection of character and effects colors, and a useful assortment of accessories and tools.

Every *Kit* contains an outstanding selection of professional quality makeup including four water-activated *Color Cake Foundations*, *MagiCake* contouring shades, and pressed contour shades. An essential assortment of classics is also included: *Bruise & Abrasions Wheel, Stage Blood, Hair Color, Liquid Latex* and *Nose & Scar Wax*. A complete set of sponges, brushes, pencils and more makes our *Cake Kit* the best available.

Three kits are designed to compliment fair, olive and brown complexions. This generous ensemble provides enough makeup for dozens of straight, beauty and character designs. Consult your local dealer for pricing.

Components based on skin tone: Four Color Cake Foundations, Creme Contour Wheel, Bruise & Abrasions Wheel (not pictured), five *MagiCake* Contour and Accent Shades, Pressed Shadow and Highlight, Pressed Rouge, Hair Color, Translucent Face Powder, two Eyebrow Pencils, Lip Pencil, Nose & Scar Wax, Spirit Gum, Spirit Gum Remover, Stage Blood, No. 3 Flat Brush, two No. 7 Flat Brushes, Rouge Brush, Eyebrow/Lash Comb, Velour Powder Puff, Hydra Sponge, Stipple Sponge, Swab Tip Applicators.

TK-11 Fair Skintones	TK-12 Olive Skintones	TK-13 Brown Skintones
----------------------	-----------------------	-----------------------



TK-11 Fair Skintone Cake Kit Components

# PERSONAL & PRODUCTION MAKEUP KITS

## Creme Personal Kits

*Creme Personal Kits* offer professional quality, superior selection and affordable pricing. Kits perform brilliantly for stage, dance recitals, choral groups, and in front of the camera. Highly pigmented, smooth-textured *Creme Foundation* and *Kit Palette* with contour, highlight, rouge and lip color, apply easily and withstand the rigors of heat, intense lighting or high energy performances. Practical basics for any character.

*Kits* include a generous supply of the makeup components listed below, adequate for several rehearsals and performances. Replacement shades and tools are available from Ben Nye's full line.

<i>Creme Foundation</i>	<i>Face Powder</i>	<i>Powder Puff</i>
<i>Creme Contour Palette</i> (includes Rouge, Highlight, Shadow, and Lip Color)	<i>Eye Pencil</i> <i>Flat Brush</i>	<i>Sponge Applicator</i> <i>Stipple Sponge</i>

Select from eight *Kits* designed with carefully selected shades to match skin tone. *Personal Kits* assure each actor the benefit of strict hygiene at an affordable price.

PK-0 Fair: Lightest	PK-3 Olive: Fair/Medium	PK-45 Brown: Light
PK-1 Fair: Light/Medium	PK-4 Olive: Deep	PK-5 Brown: Medium
PK-2 Fair: Tan		PK-6 Brown: Dark



Personal Kit



## Master Production Kit

Professional makeup artists, actors, designers and photographers rely on Ben Nye's incomparable virtuosity and quality. The *Master Production Kit* is ideal for film, video and theatrical productions. *Kit* includes an outstanding makeup collection for a variety of character designs and cast members.

Select from six light-textured *Matte Foundations* to compliment complexions ranging from fair to brown tones. Practical *Creme Highlights*, *Shadows* and *Concealers* are included to correct and augment facial contours. Finishing products, such as *Eye Shadows*, *Eye Liners*, *Lip Pencils*, *Powder Rouges*, *Bruise Wheel*, *Modeling Wax*, *Blood*, *Latex* and makeup tools, complete the ensemble.

FK-1 Components: Six Matte Foundations, Creme Rouge, two Creme Highlights, Creme Shadow, Cover-All Wheel, Bruise Wheel, Sunburn Stipple Creme, Powder Rouge, two Pressed Eye Shadows, Cake Eye Liner, two Eyebrow Pencils, Lip Pencil, Lip Color, Nose & Scar Wax, Hair Color, Fair Translucent Powder, Quick Cleanse, Spirit Gum, Spirit Gum Remover, Wrinkle Stipple, Stage Blood, Rouge Brush, Velour Powder Puff, Sponge Applicator, Stipple Sponge, Flat Brushes No. 2, 5 and 7, Round Brush No. 1, Eyebrow/Lash Comb, Swab Applicators.

# HALLOWEEN MAKEUP KITS

*Tops for Halloween, clowning and masquerade. Ben Nye creme makeup are easy to apply, blend and remove. Quality components and detailed directions help the novice and experienced artist achieve delightful, colorful and sometimes frightful effects.*



*Instructors often rely on Kits for clowning, aging and masquerade. Ample supply of makeup will last through several classes, rehearsals or productions.*



*Auguste Clown Kit*

## Auguste Clown Kit

Transform into the perfect tramp or charming hobo. A former Ringling Bros. clown designed our authentic auguste and white face clown characters.

Components: Lite Auguste Foundation, Red White & Black Color Palette, White Pencil, Flat Brush, Sponge Applicators, Quick Cleanse Remover, Color Directions.

HK-21 Applications: Minimum 4-6.



*Witch*

## Witch Kit

A bewitching design with classic creme makeup and detailed directions.

Components: Witch Foundation, Four Color Witch Palette, Black Pencil, Flat Brush, Sponge Applicators, Quick Cleanse Remover, Color Directions. HK-3 Applications: Minimum 4-6.



*Clown*

## Deluxe Clown Kit

An exceptional assortment of quality creme clown makeup. Expert directions by former Ringling Bros. Clown and professional makeup artist, Keith Cray.

Components: Pro Series Clown White Lite, Four Color Clown Wheel, Neutral Set Face Powder, Black & White Pencils, Powder Puff, Sponge Applicators, Flat Brush, Quick Cleanse Remover, Color Directions. DK-1 Applications: 12-20.



*Skeleton*

## Skeleton Kit

Create friendly or fearsome creatures with professional makeup and step-by-step directions.

Components: Skeleton White Foundation, Three Color Skeleton Palette, Black Pencil, Flat Brush, Sponge Applicators, Quick Cleanse Remover, Color Directions. HK-4 Applications: Minimum 4-6.



*3-D Special Effects*

## Deluxe 3-D Special Effects Kit

Hollywood quality components and step-by-step directions allow you to create realistic bruises, lacerations, burns, gashes, broken noses and abrasions.

Components: Four Color Special Effects Wheel, Nose & Scar Wax, Stage Blood, Spirit Gum, Spirit Gum Remover, Liquid Latex, Flat Brush, Sponge Applicators, Stipple Sponge, Color Directions. DK-2 Applications: 10-15.

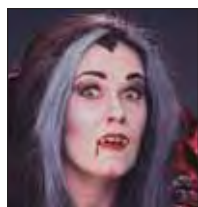


*Cat/Lion*

## Cat/Lion Kit

Design fetching felines with our exquisite colors and purr-fectly detailed directions.

Components: Cat Foundation, Four Color Cat Palette, Black Pencil, Flat Brush, Sponge Applicators, Quick Cleanse Remover, Color Directions. HK-5 Applications: Minimum 4-6.



*Vampire*

## Vampire Kit

Our most popular kit for nearly two decades includes creme colors and expert directions for ghastly vampires and vampiras.

Components: Vampira Foundation, Four Color Vampire Palette, Black Pencil, Stage Blood, Fangs, Flat Brush, Sponge Applicators, Color Directions. HK-1 Applications: Minimum 4-6.



*Old Age*

## Old Age Kit

Our special creme colors and classic aging techniques produce theatrical and masquerade success. Detailed directions for male and female.

Components: Old Age Foundation, Four Color Old Age Palette, Dark Brown Pencil, Flat Brush, Silver Grey Hair Color, Sponge Applicators, Stipple Sponge, Color Directions.

HK-6 Applications: Minimum 4-6.



*Clown*

## Clown Kit

Professional clowns rely on these same quality components to win exceptional results and loads of smiles.

Components: Clown White Lite Foundation, Four Color Clown Palette, Flat Brush, White Pencil, Sponge Applicators, Quick Cleanse Remover, Color Directions.

HK-2 Applications: Minimum 4-6.



*Ghoul*

## Ghoul Kit

Ghastly creatures are fun to create with this popular kit.

Components: Ghoul Foundation, Three Color Ghoul Palette, Black Pencil, Flat Brush, Sponge Applicators, Stage Blood, Color Directions. HK-7 Applications: Minimum 4-6.

**BN Ben Nye®**

**Ben Nye Company, Inc.**

*Never any animal testing.*

5935 Bowcroft Street  
Los Angeles, California 90016

Tel: 310. 839. 1984

Fax: 310. 839. 2640

[www.bennyemakeup.com](http://www.bennyemakeup.com)



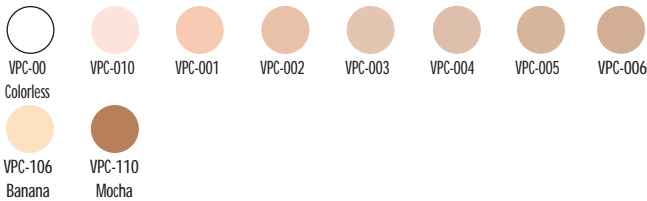
# NEW PRODUCTS

## BelleVisAGE

The Belle Visage series offers two distinctive products for today's makeup needs. Sheer Foundation and Poudre Compacté both provide sheer coverage to allow skin to radiate beneath a wash of natural color. Perfect for high definition, fashion and print photography trends.

### Belle Visage Poudre Compacté

Silky Poudre Compacté minimizes shine and lightly balances skin tones without a "powdered" look. Weightless pressed powder glides on easily for a soft, natural finish. .5oz./14gm. Expect 100-200 applications.



### Belle Visage Sheer Foundation

Sheer Foundation is a light, translucent base providing radiant, yet minimal coverage to allow skin texture to show through. Excellent for high definition filming and fashion. Select from neutral beiges, natural olive and brown tones. .56oz./16gm. Expect 25-75 applications.

#### BELLE VISAGE



#### SHINSEI



#### OLIVE

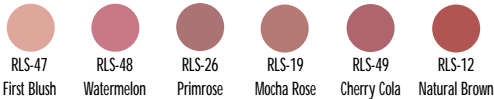


#### BROWN

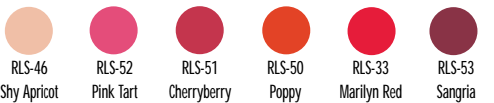


Refillable Lip Colour Palettes provide endless options for lips. Two standard palettes include six tabs of creamy, long-wearing color. Apply individually or blend into custom-perfect shades. Natural and Fashion Palettes are each filled with six creamy shades.

Natural Lip Colour Palette LSP-1 .36oz./10.2gm. Brush included.



Fashion Lip Colour Palette LSP-2 .36oz./10.2gm. Brush included.



Lip Gloss Palette LGP-1 .36oz./10.2gm. Brush included.



Empty Palette LSP-0 Brush included.

Lip Gloss Palette is filled with six tints of shiny gloss. Great over lipstick or on bare lips. Empty Palette is ready to fill with lipstick colors of your choice. All Palettes include lip brush. Palette colors available individually as Refills. Expect 200-300 applications.



Clockwise from top right: LSP-1 Natural, LGP-1 Lip Gloss and LSP-2 Fashion Palettes.